



**TUFF**<sup>TM</sup>  
**GRADE**

# 2020 PRODUCT CATALOGUE

**SAFETY SUPPLIES**

**HAND TOOLS**

**SHOP SUPPLIES**

**MATERIAL HANDLING**

**CUTTING TOOLS**



**PR DISTRIBUTION**

**WWW.PRDISTRIBUTION.CA**

**1 800 463-5259**

## **TUFF GRADE**

On the job since 2005, Tuff Grade offers an exclusive line of performance tested, high-quality tools and safety products specifically designed to provide a superior user experience and expert results.

## **PROFESSIONAL TESTING**

All Tuff Grade products are tested by professionals in the field to ensure quality results every time. We know you need the best tools and supplies to be safe and get the job done.

## **EXCLUSIVE DISTRIBUTOR NETWORK**

Our industrial, safety, and fluid power products are used every day by workers across a wide range of industries.

We will help you with your product selection and purchasing decisions. Our expertise and applied knowledge has formed the basis for our strict product specifications, so you can rest assured that your Tuff Grade products will perform to the highest standards.

## **QUALITY PRODUCTS**

Customer-focused and dedicated to quality, Tuff Grade's extensive line of products are On The Job.



**To know everything about our products,  
visit us at**

**[WWW.PRISTRIBUTION.CA](http://WWW.PRISTRIBUTION.CA)**

**Safety Supplies**



**1 - 22**

**Hand Tools**



**23 - 35**

**Shop Supplies**



**36 - 50**

**Material Handling**



**51 - 58**

**Cutting Tools**



**59-65**

## DUST MASK

- Lightweight
- Soft, adjustable nose piece for comfortable fit
- Moldable nose-piece for secure fit
- Easy breathing for increased comfort
- Two-Strap design for more secure fit
- Box Quantity: 50



Item Number	N95	Box Qty.	Valve
700-2184	No	50	No

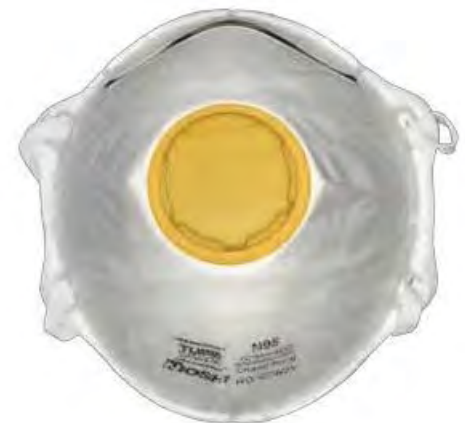
## N95 PARTICULATE MASKS

- Lightweight
- Soft, adjustable nose piece for comfortable fit
- Moldable nose-piece for secure fit
- Easy breathing for increased comfort
- Two-Strap design for more secure fit
- N95 NIOSH approved
- Box Quantity: 20



Item Number	N95	Box Qty.	Valve
700-2185	Yes	20	No

- Lightweight
- Soft, adjustable nose piece for comfortable fit
- Moldable nose-piece for secure fit
- Two-Strap design for more secure fit
- Built-in valve improves user comfort
- N95 NIOSH approved
- Box Quantity: 10



Item Number	N95	Box Qty.	Valve
700-3900	Yes	10	Yes

# SAFETY GLASSES

- Clear Anti-Fog Lens
- CSA Certified Z94.3-07
- Lightweight wrap-around design
- Molded Nose-Piece
- Frameless Polycarbonate lens
- Scratch resistant coating



Item Number	Frame Colour	Lens Colour	Anti-Fog
700-3083	Clear	Clear	Yes

- Clear Lens
- CSA Certified Z94.3-07
- Lightweight wrap-around design
- Molded Nose-Piece
- Frameless Polycarbonate lens
- Scratch resistant coating



Item Number	Frame Colour	Lens Colour	Anti-Fog
700-3084	Clear	Clear	No

- Grey Lens
- CSA Certified Z94.3-07
- Lightweight wrap-around design
- Molded Nose-Piece
- Frameless Polycarbonate lens
- Scratch resistant coating



Item Number	Frame Colour	Lens Colour	Anti-Fog
700-3085	Black	Grey	No

- Indoor / Outdoor Lens
- CSA Certified Z94.3-07
- Lightweight wrap-around design
- Molded Nose-Piece
- Frameless Polycarbonate lens
- Scratch resistant coating.



Item Number	Frame Colour	Lens Colour	Anti-Fog
700-3086	Clear	Indoor / Outdoor	No

## SAFETY GLASSES

- Lens Colour: Clear
- Coating: Anti-Fog Frame
- Colour: Clear
- Temples: Rubber (Black)
- CSA: Z94.3-07 Box
- Pack Quantity:12

Item Number	Frame Colour	Lens Colour	Anti-Fog
700-2193	Clear	Clear	Yes



- Lens Colour: Clear
- Frame Colour: Black
- Temples: Adjustable (Black)
- CSA: Z94.3-07
- Pack Quantity:12

Item Number	Frame Colour	Lens Colour	Anti-Fog
700-2194	Black	Clear	No



- Lens Colour: Clear
- Frame Colour: Clear
- Visitor Specs
- Pack Quantity:12

Item Number	Frame Colour	Lens Colour	Anti-Fog
700-2195	Clear	Indoor / Outdoor	No



## SAFETY VESTS

- 5-Point Tear Away
- 100% polyester mesh
- CSA Z96-09 Class 2, Level 2
- ANSI / ISEA 107-2004
- WCB Standard 2-1997
- BC MoT T09-05

Item Number	Colour	Size	Back	Reflective Tape
700-1719	Orange	One Size	"X"	2" 3M™ Scotchlite™
700-1720	Lime	One Size	"X"	2" 3M™ Scotchlite™



## SAFETY VESTS

- 5-Point Tear Away
- 100% polyester mesh
- CSA Z96-09 Class 2, Level 2
- ANSI / ISEA 107-2004
- WCB Standard 2-1997
- BC MoT T09-05

Item Number	Colour	Size	Back	Pockets	Reflective Tape
700-2030	Orange	One Size	"X"	1 - Left Chest Pocket	2" Generic
700-3757	Orange	One Size	"X"	2 - Left Card Holder & Right Chest Pocket	2" Generic



- 5-Point Tear Away
- 100% solid polyester
- CSA Z96-09 Class 2, Level 2
- ANSI / ISEA 107-2004
- WCB Standard 2-1997
- BC MoT T09-05

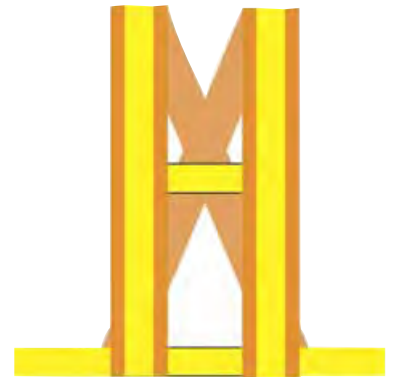
Item Number	Colour	Size	Back	Reflective Tape
700-1721	Orange	S / M	"X"	2" 3M™ Scotchlite™
700-1722	Orange	L / XL	"X"	2" 3M™ Scotchlite™
700-1723	Orange	2XL / 3XL	"X"	2" 3M™ Scotchlite™
700-1724	Lime	S / M	"X"	2" 3M™ Scotchlite™
700-1725	Lime	L / XL	"X"	2" 3M™ Scotchlite™
700-1726	Lime	2XL / 3XL	"X"	2" 3M™ Scotchlite™



## TRAFFIC HARNESS

- 2" reflective tape
- 100% solid nylon
- Meets CSA standards

Item Number	Colour	Size	Back	Reflective Tape
700-1727	Orange	Medium	"X"	2" Generic
700-1728	Orange	Large	"X"	2" Generic
700-1729	Orange	X-Large	"X"	2" Generic
700-1730	Orange	2X-Large	"X"	2" Generic
700-2381	Lime	One Size	"X"	2" Generic



## TRAFFIC CONES

- Body is made of durable PVC, with wide body design and black rubber base, for use in various weather conditions
- High visibility safety orange
- Temperature Range: -20°C to +50°C

Item Number	Height	Base	Collar(s)	Weight
700-1683	18"	10-5/8" x 10-5/8"	-	3 lbs.
700-1684	18"	10-5/8" x 10-5/8"	(1) 4"	3 lbs.
700-1685	18"	10-5/8" x 10-5/8"	(1) 6"	3 lbs.
700-1686	28"	14" x 14"	-	7 lbs.
700-1687	28"	14" x 14"	(1) 4"	7 lbs.
700-1688	28"	14" x 14"	(1) 4" & (1) 6"	7 lbs.



## DELINEATOR POSTS

- T-Top Handle
- High visibility safety orange
- UV Inhibitors resist fading of colour
- Two 4-inch high intensity Type 3 reflective bands
- Easy-carry hand hold on bottom of pole
- Top can be used to tie barricade tape or to support standard barricade lights
- 12 lbs recycled black rubber base included

Item Number	Height	Base	Collar(s)	Weight
700-1689	47"	16.5" W x 1.5" H	(2) 4"	13 lbs.



- Loop Top Design
- High visibility safety orange
- Two 4-inch high intensity Type 3 reflective bands
- UV Inhibitors resist fading of colour
- Easy-carry hand hold on bottom of pole
- Top can be used to tie barricade tape or to support standard barricade lights
- 12 lbs recycled black rubber base included

Item Number	Height	Base	Collar(s)	Weight
700-2424	44"	16.5" W x 1.5" H	(2) 4"	13 lbs.





## BARRICADE BAR

- Telescopic barricade bar
- Bar expands length for varied uses / spaces
- Works in combination with standard traffic cones
- High visibility contrasting colours



Item Number	Colour	Size Range
700-2235	Yellow and Black	45" to 100"
700-2236	Red and White	40" to 84"

## BARRICADE TAPE

- Bright colours offer visibility to deter access to hazardous areas and help eliminate accidents
- Polyethylene film is strong and durable
- Size: 3" x 1,000'
- Thickness: 0.04mm / 1.57 mil



Dispenser Box		
Item Number	Description	Colour
700-1309	CAUTION	Yellow
700-1311	DANGER	Red
700-1312	DANGER DO NOT ENTER	Red
700-1313	DANGER	Yellow
700-1310	CAUTION MEN WORKING	Yellow



Bulk (Unboxed)		
Item Number	Description	Colour
700-1774	CAUTION	Yellow
700-1775	DANGER	Red

## FLAGGING TAPE

- For indoor or outdoor use
- Mapping, Surveying, Forestry and Tagging
- Non-Adhesive surface leaves behind no residue and easy to tie and tear

Item Number	Colour	Width	Length
700-3222	Orange, Fluorescent	1"	200'
700-1777	Red, Fluorescent	1"	200'



## DISPOSABLE COVERALLS

- Microporous coverall with hood
- Is liquid resistant and offers dry particulate protection
- Lightweight and breathable for user comfort and protection
- Elastic wrists, waist and ankles for secure fit and hold
- Zipper front for easy on / off

Item Number (50 GSM)	Item Number (60 GSM)	Size	Colour
700-1860	TGDC60-L	Large	White
700-1861	TGDC60-XL	X-Large	White
700-1858	TGDC60-2XL	2X-Large	White
700-1859	TGDC60-3XL	3X-Large	White



## FSR COVERALLS

- 100% FSR (flame-spread-resistant) treated SMS non-woven material
- Ideal for protection from asbestos, paint spray, dust and noxious splashes
- 2-way zipper front with re-sealable storm flap, elastic cuff, ankle and face line, elastic waist at back to ensure comfortable fit and protection
- Flame spread resistant tested to EN 14116 Index 1
- Complies with Chemical Protective Coveralls Category III EN ISO 13982-1 Type 5 - Protection Against Hazardous Dry Particles
- Complies with Chemical Protective Coveralls Category III EN ISO 13034 Type 6 - Protection Against Light Sprays of Liquid Chemicals

Item Number	Size	Colour	Weight
700-2342	Large	Blue	50 GSM
700-2343	X-Large	Blue	50 GSM
700-2344	2X-Large	Blue	50 GSM
700-2345	3X-Large	Blue	50 GSM



## RAINWEAR, FIRE-RETARDANT

- 100% waterproof PVC/Polyester/PVC construction
- Ultrasonically welded seams for durability and waterproofing
- Includes jacket, hood & bib-style pants
- Thickness 35 mil
- Cape back and underarm vents for increased air circulation

Item Number	Size	Colour	Thickness
700-2175	Medium	Yellow	35 mil
700-2176	Large	Yellow	35 mil
700-2177	X-Large	Yellow	35 mil
700-2178	2X-Large	Yellow	35 mil
700-2179	3X-Large	Yellow	35 mil



## GLOVES, DISPOSABLE NITRILE

- 4 mil Nitrile, powder free
- Protects against chemicals and abrasives
- CFIA certified
- Textured finger tips for better grip
- Length: 9.5" (240mm) with beaded cuff

Item Number	Size	Thickness	Colour	Powder
700-2049	Small	4 mil	Light Blue	Powder Free
700-2050	Medium	4 mil	Light Blue	Powder Free
700-1952	Large	4 mil	Light Blue	Powder Free
700-1953	X-Large	4 mil	Light Blue	Powder Free



- 5 mil Nitrile, powder free
- Protects against chemicals and abrasives
- CFIA certified
- Textured finger tips for better grip
- Length: 9.5" (240mm) with beaded cuff

Item Number	Size	Thickness	Colour	Powder
700-2053	Small	5 mil	Dark Blue	Powder Free
700-1955	Medium	5 mil	Dark Blue	Powder Free
700-1956	Large	5 mil	Dark Blue	Powder Free
700-1957	X-Large	5 mil	Dark Blue	Powder Free



- 5 mil Nitrile, powder free
- Protects against chemicals and abrasives
- CFIA certified
- Textured finger tips for better grip
- Length: 9.5" (240mm) with beaded cuff

Item Number	Size	Thickness	Colour	Powder
700-1960	Small	5 mil	Black	Powder Free
700-1961	Medium	5 mil	Black	Powder Free
700-1962	Large	5 mil	Black	Powder Free
700-1963	X-Large	5 mil	Black	Powder Free
700-3760	2X-Large	5 mil	Black	Powder Free



## GLOVES, COATED

- 13 Gauge polyester
- Shell colour: grey
- Palm colour: black
- Nitrile coating provides improved grip and dexterity

Item Number	Size	Shell	Palm	CE
700-2004	X-Small	Polyester	Nitrile	4122
700-1474	Small	Polyester	Nitrile	4122
700-1475	Medium	Polyester	Nitrile	4122
700-1476	Large	Polyester	Nitrile	4122
700-1477	X-Large	Polyester	Nitrile	4122
700-1478	2X-Large	Polyester	Nitrile	4122



- 13 Gauge polyester
- Shell colour: black
- Palm colour: grey
- Foam nitrile coating provides better grip on slick, oily surfaces

Item Number	Size	Shell	Palm	CE
700-2005	X-Small	Polyester	Foam Nitrile	4122
700-2006	Small	Polyester	Foam Nitrile	4122
700-1479	Medium	Polyester	Foam Nitrile	4122
700-1480	Large	Polyester	Foam Nitrile	4122
700-1481	X-Large	Polyester	Foam Nitrile	4122
700-2010	2X-Large	Polyester	Foam Nitrile	4122



- 13 Gauge nylon
- Shell colour: black
- Palm colour: black
- Polyurethane coating provides excellent dexterity

Item Number	Size	Shell	Palm	CE
700-2011	X-Small	Nylon	Polyurethane	4141
700-2012	Small	Nylon	Polyurethane	4141
700-2013	Medium	Nylon	Polyurethane	4141
700-2014	Large	Nylon	Polyurethane	4141
700-1485	X-Large	Nylon	Polyurethane	4141
700-1906	2X-Large	Nylon	Polyurethane	4141



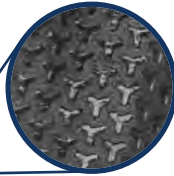
# GLOVES, COATED

- 15 Gauge nylon and spandex mixed liner
- Shell colour: Blue
- Palm colour: Black
- Soft foam nitrile coating offers superior grip



Item Number	Size	Shell	Palm	CE
700-4065	Small	Nylon/Spandex	Foam Nitrile	4121
700-4066	Medium	Nylon/Spandex	Foam Nitrile	4121
700-4067	Large	Nylon/Spandex	Foam Nitrile	4121
700-4068	X-Large	Nylon/Spandex	Foam Nitrile	4121
700-4069	2X-Large	Nylon/Spandex	Foam Nitrile	4121

- 15 Gauge nylon and spandex mixed liner
- Shell colour: Green
- Palm colour: Black
- Soft foam nitrile coating
- Harpon dots increases friction and grip



Item Number	Size	Shell	Palm	CE
700-4054	Small	Nylon/Spandex	Foam Nitrile	4121
700-4055	Medium	Nylon/Spandex	Foam Nitrile	4121
700-4056	Large	Nylon/Spandex	Foam Nitrile	4121
700-4057	X-Large	Nylon/Spandex	Foam Nitrile	4121
700-4058	2X-Large	Nylon/Spandex	Foam Nitrile	4121

- 13 Gauge Nylon
- Shell colour: Black
- Palm colour: Black
- PVC coated palms offer superior grip for wet or dry applications



Item Number	Size	Shell	Palm	CE
700-4070	Small	Nylon	PVC	4131
700-4071	Medium	Nylon	PVC	4131
700-4072	Large	Nylon	PVC	4131
700-4073	X-Large	Nylon	PVC	4131
700-4074	2X-Large	Nylon	PVC	4131

## GLOVES, COATED

- 13 gauge kevlar shell
- Shell colour: yellow
- Palm colour: black
- Kevlar / black nitrile coating combination provides increase cut, abrasion and tear resistance.
- Foam nitrile coating provides better grip on slick, oily surfaces

Item Number	Size	Shell	Palm	CE
700-2017	Small	Kevlar	Foam Nitrile	4342
700-2018	Medium	Kevlar	Foam Nitrile	4342
700-2019	Large	Kevlar	Foam Nitrile	4342
700-2020	X-Large	Kevlar	Foam Nitrile	4342
700-2021	2X-Large	Kevlar	Foam Nitrile	4342



- 13 Gauge HPPE (high performance polyethylene) shell
- Shell colour: Blue
- Palm colour: Black
- ANSI Cut Resistance Level A4
- ANSI Abrasion Resistance Level 3
- Foam nitrile coating provides better grip on slick, oily surfaces

Item Number	Size	Shell	Palm	ANSI
700-2034	Small	HPPE	Foam Nitrile	A4
700-2035	Medium	HPPE	Foam Nitrile	A4
700-2036	Large	HPPE	Foam Nitrile	A4
700-2037	X-Large	HPPE	Foam Nitrile	A4
700-2038	2X-Large	HPPE	Foam Nitrile	A4
700-2039	3X-Large	HPPE	Foam Nitrile	A4



- 13 Gauge HPPE (high performance polyethylene) shell
- Shell colour: Salt & Pepper
- Palm colour: Black
- Cut Resistance Level 3
- Polyurethane coating provides excellent dexterity

Item Number	Size	Shell	Palm	CE
700-2040	Small	HPPE	Polyurethane	4343
700-2041	Medium	HPPE	Polyurethane	4343
700-2042	Large	HPPE	Polyurethane	4343
700-2043	X-Large	HPPE	Polyurethane	4343



## GLOVES, COATED

- 10 Gauge terry brushed acrylic liner
- Shell colour: Hi-Viz Yellow
- Palm colour: Black
- Cold weather glove
- Foam latex coating provides better grip on slick, oily surfaces

Item Number	Size	Shell	Palm	CE
700-2022	Small	Acrylic	Foam Latex	1221
700-2023	Medium	Acrylic	Foam Latex	1221
700-2024	Large	Acrylic	Foam Latex	1221
700-2025	X-Large	Acrylic	Foam Latex	1221
700-2026	2X-Large	Acrylic	Foam Latex	1221



- 10 Gauge seamless knit poly-cotton shell
- Shell colour: blue
- Palm colour: blue
- **Cold weather glove**
- Wrinkle finish rubber latex coating provides superior wet or dry grip

Item Number	Size	Shell	Palm	CE
700-2027	X-Small	Poly-Cotton	Rubber Latex	3141
700-2028	Small	Poly-Cotton	Rubber Latex	3141
700-1487	Medium	Poly-Cotton	Rubber Latex	3141
700-1488	Large	Poly-Cotton	Rubber Latex	3141
700-1489	X-Large	Poly-Cotton	Rubber Latex	3141
700-2032	2X-Large	Poly-Cotton	Rubber Latex	3141



- 13 Gauge high elastic polyester outerliner with 7 Gauge red terry brushed acrylic inner liner
- Shell colour: Red
- Palm colour: Black
- **Cold weather glove**
- Foam latex coating provides better grip on slick, oily surfaces

Item Number	Size	Shell	Palm	CE
700-4059	Small	Polyester/Arylic	Foam Latex	2232
700-4060	Medium	Polyester/Arylic	Foam Latex	2232
700-4061	Large	Polyester/Arylic	Foam Latex	2232
700-4062	X-Large	Polyester/Arylic	Foam Latex	2232
700-4063	2X-Large	Polyester/Arylic	Foam Latex	2232



## GLOVES, PVC

- 14" Double Dip PVC Gauntlet Glove
- Colour: Green
- Liner: Fleece Jersey
- One-Size Fits All

Item Number	Size	Shell	Lining
TGG-300-OS	One Size	PVC	Cotton Palm



## GLOVES, MECHANICS

- Synthetic leather on palm for improved grip and dexterity
- Reinforced padding on palm for increased impact resistance
- Oil and abrasion resistant
- Breathable spandex fabric on back for snug comfortable fit
- Elastic wrist with hook and loop closure keeps debris out of glove
- Flexible knuckle guards on each finger for added protection

Item Number	Size	Leather	Lining
700-2091	Small	Synthetic	Unlined
700-2090	Medium	Synthetic	Unlined
700-2089	Large	Synthetic	Unlined
700-2092	X-Large	Synthetic	Unlined



- Full palm deerskin leather is naturally soft and flexible
- Shirred elastic cuff
- Stretch spandex back for snug fit and comfort
- Lightly padded palm

Item Number	Size	Leather	Lining
700-2085	Large	Deer	Unlined
700-2086	X-Large	Deer	Unlined
700-2087	Large	Deer	3M™ Thinsulate™
700-2088	X-Large	Deer	3M™ Thinsulate™





## GLOVES, LEATHER



- Fitters glove
- Buffalo leather provides excellent comfort, durability and strength
- Full palm
- Rubberized safety cuff for extended wrist protection
- Breathable cotton back provides ventilation for user comfort
- Cotton lined palm for improved comfort in warm conditions
- BOA lined for warmth and comfort in cool conditions
- 3M™ Thinsulate™ lined for comfort in cold conditions

Item Number	Size	Leather	Lining
<b>Cotton Lined Palm Gloves</b>			
700-4075	Large	Buffalo Grain	Cotton Palm
700-4076	Extra-Large	Buffalo Grain	Cotton Palm
<b>BOA Lined Gloves</b>			
700-4078	Medium	Buffalo Grain	BOA
700-4077	Large	Buffalo Grain	BOA
700-4079	Extra-Large	Buffalo Grain	BOA
<b>3M™ 100g Thinsulate™ Lined Gloves</b>			
700-4088	Large	Buffalo Grain	3M™ Thinsulate™
700-4089	Extra-Large	Buffalo Grain	3M™ Thinsulate™
700-4090	2X-Large	Buffalo Grain	3M™ Thinsulate™



- Fitters glove
- Grain leather provides excellent comfort, durability and strength
- **Full / One-piece palm**
- Rubberized safety cuff for extended wrist protection
- Breathable cotton back provides ventilation for user comfort
- Cotton Lined

Item Number	Size	Leather	Lining
700-1491	Large	Grain	Cotton Palm
700-1492	X-Large	Grain	Cotton Palm



- Fitters glove
- Grain leather provides excellent comfort, durability and strength
- **Patch / Two-piece palm**
- Rubberized safety cuff for extended wrist protection
- Breathable cotton back provides ventilation for user comfort
- Cotton lined

Item Number	Size	Leather	Lining
700-1490	Large	Grain	Cotton Palm



## GLOVES, LEATHER

- Fitters glove
- Split leather provides excellent comfort, durability and strength
- Patch / two-piece palm
- Starched cuff
- Breathable cotton back provides ventilation for user comfort
- Unlined

Item Number	Size	Leather	Lining
700-1502	Large	Split	Unlined



- Fitters glove with gauntlet cuff
- Split leather provides excellent comfort, durability and strength
- Full / one-piece palm
- Rubberized safety cuff for extended wrist protection
- Breathable cotton back provides ventilation for user comfort
- Cotton Lined

Item Number	Size	Leather	Lining
700-2073	Large	Split	Cotton



- Fitters glove
- Split leather provides excellent comfort, durability and strength
- Patch / two-piece palm
- Rubberized safety cuff for extended wrist protection
- Breathable cotton back provides ventilation for user comfort
- Cotton lined palm for comfort

Item Number	Size	Leather	Lining
700-2070	Large	Split	Cotton



# GLOVES, LEATHER

- Drivers glove
- Full / one-piece palm
- Shirred elastic cuff
- Goat skin leather provides excellent comfort, durability and strength
- 3M™ 100g Thinsulate™ lined for work in cold weather
- Unlined for work in warm weather



Item Number	Size	Leather	Lining
<b>3M™ Thinsulate™ Lined Gloves</b>			
700-4082	Small	Goat Skin	3M™ Thinsulate™
700-4081	Medium	Goat Skin	3M™ Thinsulate™
700-4080	Large	Goat Skin	3M™ Thinsulate™
700-4083	Extra-Large	Goat Skin	3M™ Thinsulate™
<b>Unlined Gloves</b>			
700-4086	Small	Goat Skin	Unlined
700-4085	Medium	Goat Skin	Unlined
700-4084	Large	Goat Skin	Unlined
700-4087	Extra-Large	Goat Skin	Unlined



- Drivers glove
- Full / one-piece grain leather palm
- Split leather backing
- Shirred elastic cuff
- Unlined palm



Item Number	Size	Leather	Lining
700-4050	Medium	Grain / Split	Unlined
700-4051	Large	Grain / Split	Unlined
700-4052	Extra-Large	Grain / Split	Unlined
700-4053	2X-Large	Grain / Split	Unlined



## GLOVES, LEATHER

- Drivers glove
- Full / one-piece palm
- Shirred elastic cuff
- Grain leather provides excellent comfort, durability and strength
- Cotton lined palm for comfort

Item Number	Size	Leather	Lining
700-2065	Medium	Grain	Cotton
700-1494	Large	Grain	Cotton
700-1496	X-Large	Grain	Cotton

Item Number	Size	Leather	Lining
700-2068	Medium	Grain	Unlined
700-2067	Large	Grain	Unlined
700-2069	X-Large	Grain	Unlined



- Fitters glove
- Split leather provides excellent comfort, durability and strength
- Full / one-piece palm
- Rubberized safety cuff for extended wrist protection
- BOA lined

Item Number	Size	Leather	Lining
700-1500	Large	Grain	BOA
700-1501	X-Large	Grain	BOA



- Fitters glove
- Grain leather provides excellent comfort, durability and strength
- Full / one-piece palm
- Rubberized safety cuff for extended wrist protection
- Removable 3M™ 100g Thinsulate™ lined for work in cold weather

Item Number	Size	Leather	Lining
700-2358	Large	Grain	3M™ Thinsulate™



## GLOVES, LEATHER

- Fitters glove
- Pigskin leather provides excellent comfort, durability and strength
- Full / one-piece palm
- Rubberized safety cuff for extended wrist protection
- 3M™ 100g Thinsulate™ lined for work in cold weather



Item Number	Size	Leather	Lining
700-3761	Large	Pigskin	3M™ Thinsulate™
700-3762	Large	Pigskin	3M™ Thinsulate™

- Fitters glove
- Cowhide leather provides excellent comfort, durability and strength
- Full / one-piece palm
- Rubberized safety cuff for extended wrist protection
- 3M™ 100g Thinsulate™ lined for work in cold weather



Item Number	Size	Leather	Lining
700-2081	Large	Grain	3M™ Thinsulate™
700-1511	X-Large	Grain	3M™ Thinsulate™
700-1967	2X-Large	Grain	3M™ Thinsulate™

- Fitters glove
- Split cowhide leather provides excellent comfort, durability and strength
- Full / one-piece palm
- Rubberized safety cuff for extended wrist protection
- 3M™ 40g Thinsulate™ lined for work in cold weather



Item Number	Size	Leather	Lining
700-1968	Large	Split	3M™ Thinsulate™
700-1969	X-Large	Split	3M™ Thinsulate™

- Fitters glove
- Split cowhide leather provides excellent comfort, durability and strength
- Full / one-piece palm
- Rubberized safety cuff for extended wrist protection
- 3M™ 100g Thinsulate™ lined for work in cold weather



Item Number	Size	Leather	Lining
700-2078	Large	Split	3M™ Thinsulate™
700-2079	X-Large	Split	3M™ Thinsulate™

## GLOVES, COTTON

- 9 oz. Brown Jersey glove
- Red fleece lining for extra warmth in cold conditions
- Shirred elastic cuff for easy on/off
- Can be used as a liner or on its own

Item Number	Size	Material	Lining
700-2044	X-Large	9 oz. Brown Jersey	Red Fleece



- Clute cut design with full canvas back
- Knit wrist helps keep out dirt & debris
- Split cowhide leather palm
- Straight thumb

Item Number	Size	Leather	Lining
700-2045	Large	Split	Unlined



- String knit, reversible, glove
- Regular weight and bleached
- 60% Polyester 40% Cotton
- Knit wrist with colour-coded hem helps keep out dirt & debris

Item Number	Size	Material	Lining
700-1518	Large	Poly-Cotton	Unlined



- Cotton canvas with PVC dots on palm
- PVC dots improved grip of forefinger and palm
- Straight thumb
- Clute cut

Item Number	Size	Material	Lining
700-2048	Large	Cotton Canvas	Unlined



## GLOVES, COTTON

- 8 oz. 100% cotton
- Clut cut design
- Knit wrist helps keep out dirt & debris

Item Number	Size	Material	Lining
700-2047	Large	Cotton	Unlined



## GLOVES, OILBLOC

- Oilbloc treatment for greater oil and water resistant
- Shirred elastic cuff
- Highly stain resistant
- Cotton line and unlined palm gloves

Item Number	Size	Leather	Lining
700-3763	Small	Goat Grain	Unlined
700-2095	Medium	Goat Grain	Unlined
700-2094	Large	Goat Grain	Unlined
700-2096	X-Large	Goat Grain	Unlined

Item Number	Size	Leather	Lining
700-2099	Small	Goat Grain	Cotton
700-2098	Medium	Goat Grain	Cotton
700-2097	Large	Goat Grain	Cotton
700-2100	X-Large	Goat Grain	Cotton



## GLOVES, WELDING

- Fully lined welders glove
- Grey split cowhide leather provides excellent comfort, durability and strength
- Gunn cut with wing thumb

Item Number	Size	Leather	Lining	Style
700-2074	Large	Split	Thermal	Three Finger
700-1506	Large	Split	Thermal	Five Finger



## GLOVES, WELDING

- Made of split buffalo leather
- Velcro wrist band for secure fit
- Weltd seams for added durability
- Heat and flame resistant
- Fully lined
- Gunn cut with gauntlet cuff for maximum protection
- One Size Fits All

Item Number	Size	Leather	Lining	Style
700-2311	Large	Buffalo	Cotton	Gunn



- TIG welder's glove
- Made of goat skin leather
- Weltd seams for added durability
- Heat and flame resistant
- Fully lined
- Gunn cut with gauntlet cuff for maximum protection
- One Size Fits All

Item Number	Size	Leather	Lining	Style
700-2312	Large	Goat	Cotton	Gunn



- Made of split buffalo hide leather
- Kevlar Stitching with weltd seams for added durability
- Heat and flame resistant
- Fully lined
- Gunn cut with gauntlet cuff for maximum protection
- One Size Fits All

Item Number	Size	Leather	Lining	Style
700-2310	Large	Buffalo	Cotton	Gunn



- Made of split buffalo hide leather
- Kevlar Stitching with weltd seams for added durability
- Heat and flame resistant
- Fully lined
- Gunn cut with gauntlet cuff for maximum protection
- One Size Fits All

Item Number	Size	Leather	Lining	Style
700-2313	One Size	Buffalo	Cotton	Five Finger





## GLOVES, WELDING

- Made of split buffalo hide leather
- Weltd seams for added durability
- Heat and flame resistant
- Fully lined
- Gunn cut with gauntlet cuff for maximum protection
- One Size Fits All



Item Number	Size	Leather	Lining	Style
700-2314	One Size	Buffalo	Cotton	Five Finger

## WELDING JACKET

- Made of cow split leather
- Stitched with kevlar thread
- Stainless steel buttons
- 1 internal pocket
- 1 external pen pocket on right arm



Item Number	Size	Leather	Stitching
700-2321	Small	Cow	Kevlar
700-2320	Medium	Cow	Kevlar
700-2319	Large	Cow	Kevlar
700-2322	X-Large	Cow	Kevlar
700-2317	2X-Large	Cow	Kevlar
700-2318	3X-Large	Cow	Kevlar

## WELDING APRON

- Made of cow split Leather
- Stitched with Kevlar thread
- Plastic Buckle & Loop System to Tie up the Apron
- Fixed Strap to Hold Apron at Neck
- Size : 60 x 90CM



Item Number	Size	Leather	Dimensions	Stitching
700-2316	Small	Cow	60 x 90 cm	Kevlar

## 3/8" DRIVE SAE & METRIC SOCKET SET

- 3/8" Drive professional ratchet with quick release
- 72 Tooth ratchet, for minimal movement fastening
- 44 Piece set kit includes:
- 2 Extension bars, 3" & 6"
- 1 1-7/8" universal joint
- 1 8" sliding T-bar
- Blow moulded carrying case

Item Number	Total Pieces	Sockets in Set
700-3051	44	6 Point Sockets: 3/8" - 3/4" & 8mm - 19mm 6 Point Deep Sockets: 3/8" - 3/4" & 8mm - 19mm



## 1/2" DRIVE SAE & METRIC SOCKET SET

- 1/2" Drive professional ratchet with quick release
- 72 Tooth ratchet, for minimal movement fastening
- 55 Piece set kit includes:
- 2 Extension bars, 5" & 10"
- 1 2-3/4" Universal joint
- 1 10" Sliding T-Bar
- Blow moulded carrying case

Item Number	Total Pieces	Sockets in Set
700-3052	55	6 point Sockets 3/8" - 1-1/4" & 10mm - 32mm 6 point Deep Sockets 7/16" - 7/8" & 10mm - 21mm



## 3/4" DRIVE SAE SOCKET SET

- 3/4" Drive professional ratchet
- 24 Tooth oval shaped reversible ratchet
- 21 Piece set includes:
- 2 Extension bars 4" & 8"
- 1 18" Sliding T-handle

Item Number	Total Pieces	Sockets in Set
700-2209	21	6 point Sockets 3/4" - 2"



## SOCKETS, INDIVIDUAL

6 Point, 3/8" Drive Sockets		
Item Number	Size	Depth
700-2382	3/8"	Regular
700-2383	7/16"	Regular
700-2384	1/2"	Regular
700-2385	9/16"	Regular
700-2386	5/8"	Regular
700-2387	11/16"	Regular
700-2388	3/4"	Regular
700-3764	3/8"	Deep
700-3765	7/16"	Deep
700-3766	1/2"	Deep
700-3767	9/16"	Deep
700-3768	5/8"	Deep
700-3769	11/16"	Deep
700-3770	3/4"	Deep
700-3771	13/16"	Deep
700-3772	8 mm	Regular
700-3773	9 mm	Regular
700-3774	10 mm	Regular
700-3775	11 mm	Regular
700-3776	12 mm	Regular
700-3777	13 mm	Regular
700-3778	14 mm	Regular
700-3779	15 mm	Regular
700-3780	16 mm	Regular
700-3781	17 mm	Regular
700-3782	18 mm	Regular
700-3783	19 mm	Regular
700-3784	8 mm	Deep
700-3785	9 mm	Deep
700-3786	10 mm	Deep
700-3787	11 mm	Deep
700-3788	12 mm	Deep
700-3789	13 mm	Deep
700-3790	14 mm	Deep
700-3791	15 mm	Deep

Item Number	Size	Depth
700-3792	16 mm	Deep
700-3793	17 mm	Deep
700-3794	18 mm	Deep
700-3795	19 mm	Deep
6 Point, 1/2" Drive Sockets		
700-3796	3/8"	Regular
700-3797	7/16"	Regular
700-3798	1/2"	Regular
700-3799	9/16"	Regular
700-3800	5/8"	Regular
700-3801	11/16"	Regular
700-3802	3/4"	Regular
700-3803	13/16"	Regular
700-3804	7/8"	Regular
700-3805	15/16"	Regular
700-3806	1"	Regular
700-3807	1 1/16"	Regular
700-3808	1 1/8"	Regular
700-3809	1 3/16"	Regular
700-3810	1 1/4"	Regular
700-3811	7/16"	Deep
700-3812	1/2"	Deep
700-3813	9/16"	Deep
700-3814	5/8"	Deep
700-3815	11/16"	Deep
700-3816	3/4"	Deep
700-3817	7/8"	Deep
700-3818	10 mm	Regular
700-3819	11 mm	Regular
700-3820	12 mm	Regular
700-3821	13 mm	Regular
700-3822	14 mm	Regular
700-3823	15 mm	Regular
700-3824	16 mm	Regular
700-3825	17 mm	Regular
700-3826	18 mm	Regular

Item Number	Size	Depth
700-3827	19 mm	Regular
700-3828	21 mm	Regular
700-3829	22 mm	Regular
700-3830	23 mm	Regular
700-3831	24 mm	Regular
700-3832	27 mm	Regular
700-3833	30 mm	Regular
700-3834	32 mm	Regular
700-3835	10 mm	Deep
700-3836	12 mm	Deep
700-3837	13 mm	Deep
700-3838	14 mm	Deep
700-3839	15 mm	Deep
700-3840	16 mm	Deep
700-3841	17 mm	Deep
700-3842	18 mm	Deep
700-3843	19 mm	Deep
700-3844	21 mm	Deep
12 Point, 3/4" Drive Sockets		
700-3845	3/4"	Regular
700-3846	7/8"	Regular
700-3847	15/16"	Regular
700-3848	1"	Regular
700-3849	1 1/16"	Regular
700-3850	1 1/8"	Regular
700-3851	1 3/16"	Regular
700-3852	1 1/4"	Regular
700-3853	1 5/16"	Regular
700-3854	1 3/8"	Regular
700-3855	1 7/16"	Regular
700-3856	1 1/2"	Regular
700-3857	1 5/8"	Regular
700-3858	1 3/4"	Regular
700-3859	1 7/8"	Regular
700-3860	2"	Regular

## DEEP IMPACT SOCKET SETS

- 6 Point sockets
- Chrome molybdenum steel for strength and durability
- Finish: black phosphate
- Includes blow molded case

Item Number	Total Pieces	Drive	Sockets in Set
700-1676	11	1/2"	3/8", 7/16", 1/2", 9/16", 5/8", 11/16", 3/4", 13/16", 7/8", 15/16", 1"
700-1677	11	1/2"	10mm, 12mm, 13mm, 14mm, 15mm, 17mm, 18mm, 19mm, 21mm, 22mm 24mm
700-1678	8	3/4"	1", 1-1/16", 1-1/8", 1-1/4", 1-5/16", 1-3/8", 1-7/16", 1-1/2"
700-1679	8	3/4"	24mm, 27mm, 29mm, 30mm, 32mm, 35mm, 36mm, 38mm



## IMPACT SOCKETS, INDIVIDUAL

6 Point, 1/2" Drive Sockets		
Item Number	Size	Depth
700-2382	3/8"	Deep
700-2383	7/16"	Deep
700-2384	1/2"	Deep
700-2385	9/16"	Deep
700-2386	5/8"	Deep
700-2387	11/16"	Deep
700-2388	3/4"	Deep
700-2389	13/16"	Deep
700-2390	7/8"	Deep
700-1676-15/16	15/16 po	Deep
700-2392	1"	Deep
700-2393	10 mm	Deep
700-2394	12 mm	Deep

6 Point, 1/2" Drive Sockets		
Item Number	Size	Depth
700-2395	13 mm	Deep
700-2396	14 mm	Deep
700-2397	15 mm	Deep
700-2398	17 mm	Deep
700-2399	18 mm	Deep
700-2400	19 mm	Deep
700-2401	21 mm	Deep
700-2402	22 mm	Deep
700-2403	24 mm	Deep
6 Point, 3/4" Drive Sockets		
700-2404	1"	Deep
700-2405	1-1/16 po	Deep
700-2406	1-1/8 po	Deep

6 Point, 3/4" Drive Sockets		
Item Number	Size	Depth
700-2407	1-1/4 po	Deep
700-3745	1-5/16 po	Deep
700-3746	1-3/8 po	Deep
700-2410	1-7/16 po	Deep
700-2411	1-1/2 po	Deep
700-2412	24 mm	Deep
700-2413	27 mm	Deep
700-2414	29 mm	Deep
700-2415	30 mm	Deep
700-2416	32 mm	Deep
700-2417	35 mm	Deep
700-2418	36 mm	Deep
700-2419	38 mm	Deep

# COMBINATION WRENCH SETS

- Chrome vanadium steel alloy for strength and durability
- Polished mirror finish for quick cleaning
- 12 Point design minimizes fastener damage and increases torque
- Premium canvas pouch

Item Number	Total Pieces	Sizes in Set
700-1357	16	1/4", 5/16", 3/8", 7/16", 1/2", 9/16", 5/8", 11/16", 3/4", 13/16", 7/8", 15/16", 1", 1-1/16", 1-1/8", 1-1/4"
700-2339	10	1-5/16", 1-3/8", 1-7/16", 1-1/2", 1-5/8", 1-11/16", 1-3/4", 1-13/16", 1-7/8", 2"



# COMBINATION WRENCHES

- Chrome vanadium steel alloy for strength and durability
- Polished mirror finish for quick cleaning
- 12 Point design minimizes fastener damage and increases torque



Item Number	Size	Length
700-1314	1/4"	5.08"
700-1315	5/16"	5.55"
700-1316	3/8"	6.30"
700-1317	7/16"	6.57"
700-1318	1/2"	7.20"
700-1319	9/16"	7.51"
700-1320	5/8"	8.39"
700-1321	11/16"	8.90"
700-1322	3/4"	9.84"
700-1323	13/16"	10.47"
700-1324	7/8"	11.57"
700-1325	15/16"	12.08"
700-1326	1"	13.38"
700-1327	1-1/16"	14.21"

Item Number	Size	Length
700-1330	1-1/8"	16.37"
700-1331	1-1/4"	16.77"
700-1332	1-5/16"	17.71"
700-1333	1-3/8"	17.51"
700-1334	1-7/16"	18.70"
700-1335	1-1/2"	18.50"
700-1336	1-5/8"	19.68"
700-1337	1-11/16"	21.06"
700-1338	1-3/4"	21.06"
700-1339	1-13/16"	21.06"
700-1340	1-7/8"	22.55"
700-1341	2"	23.74"
700-2326	2-1/8"	26.57"
700-2327	2-1/4"	26.57"
700-2328	2-3/8"	27.55"
700-2329	2-1/2"	27.55"

## METRIC COMBINATION WRENCH SETS

- Chrome vanadium steel alloy for strength and durability
- Polished mirror finish for quick cleaning
- 12 Point design minimizes fastener damage and increases torque
- Premium canvas pouch

Item Number	Total Pieces	Sizes in Set
700-2341	22	7mm, 8mm, 9mm, 10mm, 11mm, 12mm, 13mm, 14mm, 15mm, 16mm, 17mm, 18mm, 19mm, 20mm, 21mm, 22mm, 23mm, 24mm, 26mm, 27mm, 30mm, 32mm
700-3060	16	7mm, 8mm, 9mm, 10mm, 11mm, 12mm, 13mm, 14mm, 15mm, 16mm, 17mm, 18mm, 19mm, 21mm, 22mm, 24mm
700-1356	14	7mm, 8mm, 10mm, 12mm, 14mm, 16mm, 17mm, 20mm, 22mm, 24mm, 26mm, 28mm, 30mm, 32mm



## METRIC COMBINATION WRENCHES

- Chrome vanadium steel alloy for strength and durability
- Polished mirror finish for quick cleaning
- 12 Point design minimizes fastener damage and increases torque



Item Number	Size	Length
700-1342	7 mm	5.28"
700-1343	8 mm	5.55"
700-3061	9 mm	5.91"
700-1344	10 mm	6.30"
700-1345	12 mm	6.85"
700-3062	13 mm	7.20"
700-1346	14 mm	7.52"
700-3063	15 mm	7.95"
700-1347	16 mm	8.39"

Item Number	Size	Length
700-1348	17 mm	8.90"
700-3064	18 mm	9.41"
700-3065	19 mm	9.84"
700-1349	20 mm	10.47"
700-1350	22 mm	11.57"
700-1351	24 mm	12.55"
700-1352	26 mm	13.38"
700-1353	28 mm	14.21"
700-1354	30 mm	16.37"
700-1355	32 mm	16.77"

## ADJUSTABLE WRENCHES

- Chrome Vanadium Steel for strength and durability
- Chrome Finish
- Cushioned grip for added comfort and visibility or choose plain grip

Item Number	Handle	Length	Max Jaw Width
700-1040	Plain Grip	6"	15/16"
700-1041	Plain Grip	8"	1-1/8"
700-1036	Plain Grip	10"	1-5/16"
700-1037	Plain Grip	12"	1-1/2"
700-1038	Plain Grip	15"	1-11/16"
700-1039	Plain Grip	18"	2-1/16"
700-1043	Cushion Grip	6"	15/16"
700-1044	Cushion Grip	8"	1-1/8"
700-1045	Cushion Grip	10"	1-5/16"
700-1046	Cushion Grip	12"	1-1/2"



## PIPE WRENCHES, STRAIGHT HANDLE

- Constructed from cast iron for strength and durability
- Aluminum pipes are lighter than regular steel pipe wrench
- Replaceable Jaws

Item Number	Body	Length	Pipe Capacity
700-1631	Cast Iron	8"	1"
700-1632	Cast Iron	10"	1.5"
700-1634	Cast Iron	12"	2"
700-1636	Cast Iron	14"	2"
700-1638	Cast Iron	18"	2.5"
700-1640	Cast Iron	24"	3"
700-1633	Aluminum	10"	1"
700-1635	Aluminum	12"	1.5"
700-1637	Aluminum	14"	2"
700-1639	Aluminum	18"	2.5"
700-1641	Aluminum	24"	3"
700-1643	Aluminum	36"	5"
700-1645	Aluminum	48"	6"



## PLIERS

- Constructed of chrome vanadium steel hardened for maximum strength and durability
- Double-dipped handles provide comfortable use
- Meet ANSI Standards

Item Number	Type	Length	Shipping Weight
700-1604	Long Nose	7"	.42 lbs
700-1605	Long Nose	8"	.50 lbs
700-1606	Bent Nose	6"	.29 lbs
700-1607	Bent Nose	8"	.50 lbs
700-1594	Slip Joint	6"	.41 lbs
700-1595	Slip Joint	8"	.64 lbs
700-1596	Slip Joint	10"	.91 lbs
700-1599	Groove Joint	8"	.56 lbs
700-1600	Groove Joint	10"	.94 lbs
700-1601	Groove Joint	12"	1.40 lbs
700-1602	Linesman	6"	.44 lbs
700-1603	Linesman	8"	.77 lbs
700-1608	Diagonal Cutter	6"	.31 lbs
700-3066	Diagonal Cutter	7"	.42 lbs
700-1610	Diagonal Cutter	8"	.51 lbs



Long Nose



Bent Nose



Slip Joint



Groove Joint



Linesman



Diagonal Cutter

## PLIERS, CURVED JAW LOCKING

- Constructed of chrome vanadium steel hardened for maximum strength and durability
- Bare metal handle
- Curved jaws, knurled tips and wire cutters
- Locks instantly, releases quickly and adjusts to pliers action
- Meets ANSI Standards

Item Number	Type	Length	Min Open	Max Open
700-1609	Curved Jaw Locking	7"	.67"	1.14"
700-1611	Curved Jaw Locking	10"	.79"	1.46"





## TIN SNIPS

- Material: 55# Steel
- Cushion grip dipped handle for comfort and improved grip
- Straight, Left and Right cuts

Item Number	Length	Cut Length	Capacity
700-3077	7-3/4"	1-3/4"	21 gauge
700-3078	9-3/4"	2-3/8"	20 gauge
700-3079	11-3/4"	2-3/4"	20 gauge



## AVIATION SNIPS

- Non-Slip Serrated Jaws
- Colour Coded Handles
- Self Opening Spring Function

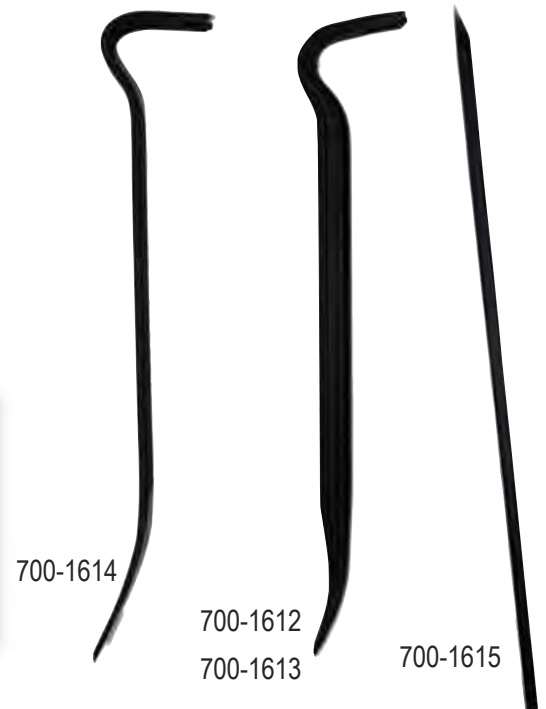
Item Number	Length	Cut	Colour	Capacity
700-3074	10"	Straight	Yellow	18 Gauge
700-3075	10"	Left	Red	18 Gauge
700-3076	10"	Right	Green	18 Gauge



## WRECKING, UTILITY & PRY BARS

- Wrecking Bar combines roll head and angle pry bar ends for better access in tight work areas
- Tempered Alloy Steel
- Electrostatic Powder Coated Finish
- Pry Bar has a round tapered handle and pinch point end to pry and lever heavy objects

Item Number	Description	Length	Weight
700-1612	Wrecking Bar	24"	4.25 lbs.
700-1613	Wrecking Bar	36"	6.25 lbs.
700-1614	Utility Bar	15"	1.5 lbs.
700-1615	Pry Bar	60"	18 lbs.



## SCREWDRIVERS

- Chrome Vanadium Steel blades for hardness and high strength
- Black magnetic tip for easy start
- Nonslip plastic handle that's comfortable to grip
- Quick reference handle imprint

Item Number	Head	Head Size	Blade Length
700-1656	Phillips	#1	4"
700-1658	Phillips	#2	1.5"
700-1659	Phillips	#3	6"
700-1660	Square	#1	4"
700-1662	Square	#2	1.5"
700-1663	Square	#3	6"
700-1664	Slot	3/16"	4"
700-1666	Slot	1/4"	1.5"



## HEX KEY SETS

- Chrome vanadium steel
- Finish: Black oxide
- Rubber handle / holder

Item Number	Style	Pieces	Size Range
700-3067	Folding - Regular	8	1.5 - 8 mm
700-3068	Folding - Regular	9	5/64" - 1/4"



## HOLE SAW KIT

- M42 Cobalt high speed steel, stays sharp and hard in heavy-duty production / usage
- Variable pitch maintains smoothing cutting in a wide variety of material
- Colour: White
- Arbors: 3/8 Hex for sizes: 9/16 - 1-3/16  
1/2 Hex for sizes: 1-1/4 - 4-3/4

Item Number	Total Pieces	Sizes in Set
700-3073	19	3/4", 7/8", 1-1/8", 1-3/8", 1-1/2", 1-3/4", 2", 2-1/4", 2-1/2", 2-5/8", 3", 3-1/2", 3-5/8", 4-1/8", 4-1/4", 4-1/2", 4-3/4"

## HOLE SAWS, INDIVIDUAL

Item Number	Diameter	Max Depth	TPI
700-3741	3/4"	1-1/2"	4-6
700-3742	7/8"	1-1/2"	4-6
700-3747	1-1/8"	1-1/2"	4-6
700-2363	1-3/8"	1-1/2"	4-6
700-3743	1-1/2"	1-1/2"	4-6
700-2365	1-3/4"	1-1/2"	4-6
700-2366	2"	1-1/2"	4-6
700-3744	2-1/4"	1-1/2"	4-6
700-2368	2-1/2"	1-1/2"	4-6
700-2369	2-5/8"	1-1/2"	4-6
700-2370	3"	1-1/2"	4-6
700-2371	3-1/2"	1-1/2"	4-6
700-2372	3-5/8"	1-1/2"	4-6
700-2373	4-1/8"	1-1/2"	4-6
700-2374	4-1/4"	1-1/2"	4-6
700-2375	4-1/2"	1-1/2"	4-6
700-2376	4-3/4"	1-1/2"	4-6

## MANDREL, INDIVIDUAL

Item Number	Hex Size	Min. Size	Max. Size
700-2378	3/8"	9/16"	13/16"
700-2379	1/2"	1-1/4"	7-7/8"



# UTILITY KNIVES

- Heavy-Duty cutter
- Contoured handle
- Stainless steel blade channel
- Replacement blades: TGUK-001-10

Item Number	Description	Replacement Blade
700-1699	Ratchet Lock Blade, Utility Knife	700-1700

- Standard Duty cutter
- Stainless steel blade channel
- Attached blade snapper
- Replacement blades: TGUK-018-10

Item Number	Description	Replacement Blade
700-1701	Slide Lock Blade, Utility Knife	700-1702

- Heavy-Duty cutter
- Handle holds 5 blades
- Auto-Load blade function
- Stainless steel blade channel
- Replacement blade: TGUK-002-10

Item Number	Description	Replacement Blade
700-2237	Heavy-Duty, Utility Knife	700-2238

## REPLACEMENT BLADES

Item Number	Blades Per Pack	Segments Per Blade	Use With Model
700-1700	10	8	700-1699
700-2238	10	8	700-2237
700-1702	10	12	700-1702



## LEVELS



- High strength aluminum body provides maximum durability
- Shock absorbing rubber end caps
- Comfortable rubber grips

Item Number	Type	Length	Width	Height	Vials	Accuracy	Magnetic
700-1618	Box	24"	2.35"	0.95"	3	.001	No
700-1622	Box	48"	2.35"	0.95"	3	.001	No
700-1625	Box	72"	2.35"	0.95"	3	.001	No
700-1619	Box	24"	2.40"	1.125"	3	.0005	No
700-1623	Box	48"	2.40"	1.125"	3	.0005	No
700-1626	Box	72"	2.40"	1.125"	3	.0005	No
700-3863	Box	24"	2.15"	0.975"	3	.0005	Yes
700-3864	Box	48"	2.15"	0.975"	3	.0005	Yes
700-3865	Box	72"	2.15"	0.975"	3	.0005	Yes
700-1620	I-Beam	24"	2.75"	1.125"	3	.0005	Yes
700-1624	I-Beam	48"	2.75"	1.125"	3	.0005	Yes

## LEVEL, TORPEDO



700-1617

- Tubular vials are accurate within 0.001 per inch
- High strength aluminum / maximum durability
- Magnetic



700-1616

- Tubular vials are accurate within 0.001 per inch
- High strength plastic
- Shockproof rubber tips
- Magnetic

Item Number	Length	45 Vial	Level Vials	Plumb Vials
700-1621	9"	1	1	1
700-1617	9"	1	1	1

## LEVEL, LASER



- Tubular vials are accurate within 0.001 per inch
- High strength aluminum frame provides maximum durability
- Shock absorbing rubber end caps
- Digital Module for accurate reads of slope
- Laser Functions: Horizontal Line, Cross-Line Pattern

Item Number	Length	45 Vial	Level Vials	Plumb Vials
700-1621	24"	-	1	1

## DIGITAL CALIPERS

- Display: SAE & Metric
- Resolution: 0.0005"
- Battery & Case Included
- Fine Adjustment Thumb Wheel
- Function Buttons:
  - SAE/Metric Conversion
  - Zero at Any Position

Item Number	Range	Housing	Resolution
700-1031	0-6" / 150mm	Stainless Steel	0.0005"

Item Number	Range	Housing	Resolution
700-3866	0-6" / 150mm	Stainless Steel	0.0005"
IP54 Water Proof Rating			

Item Number	Range	Housing	Resolution
700-1030	0-6" / 150mm	Plastic	0.0005"
700-1032	0-8" / 200mm	Plastic	0.0005"



## MICROMETERS

Item Number	Description	Range	Graduation
700-1025	Outside Micrometer	0 - 25mm	0.01 mm
700-1026	Outside Micrometer	25 - 50mm	0.01 mm
700-1027	Outside Micrometer	50 - 75mm	0.01 mm
700-1029	Outside Micrometer	0 - 1"	0.00005"
700-1028	3PC Set - 0 - 1", 1" - 2", 2" - 3"		



## TAPE MEASURES

- High impact ABS case for longevity
- Thumb lock for quick lock / release function
- Belt clip for easy storage

Item Number	Length	Width	Magnetic Tip	Graduation
700-1691	16' (5m)	3/4" (19mm)	No	Inch Only
*700-1692	16' (5m)	3/4" (19mm)	No	Inch & Metric
700-1693	25' (7.5m)	1" (25mm)	No	Inch Only
*700-1694	25' (7.5m)	1" (25mm)	No	Inch & Metric
700-1695	16' (5m)	3/4" (19mm)	Yes	Inch Only
700-1696	16' (5m)	3/4" (19mm)	Yes	Inch & Metric
700-1697	25' (7.5m)	1" (25mm)	Yes	Inch Only
700-1698	25' (7.5m)	1" (25mm)	Yes	Inch & Metric

\* with PR Distribution's logo

- High impact steel body for longevity
- Thumb lock for quick lock / release function
- Belt clip for easy storage
- Magnetic tip

Item Number	Length	Width	Magnetic Tip	Graduation
700-2210	18' (5.5m)	3/4" (19mm)	Yes	Inch Only
700-2211	18' (5.5m)	3/4" (19mm)	Yes	Inch & Metric
700-2212	18' (5.5m)	1" (25mm)	Yes	Inch & Metric
700-2213	26' (8m)	1" (25mm)	Yes	Inch & Metric

## Personalized Measuring Tape with your logo

One time charge for graphic design applicable only on first order and free on consecutive orders. **Minimum quantity of 48.**

Item Number	Length	Width	Magnetic Tip	Graduation
700-1692PROMO	16' (5 m)	3/4' (19mm)	No	SAE/Met.
700-1694PROMO	25' (7.5m)	1' (19mm)	No	SAE/Met.



## DIAL INDICATORS, IMPERIAL

Item Number	Diameter	Range	Reading	Graduation
700-1022	1.50"	0 - 0.25"	0-100-0	.001"
700-1023	2.25"	0 - 0.50"	0-100-0	.005"
700-1024	2.25"	0 - 1.00"	0-100-0	.001"

## DIAL INDICATORS, METRIC

Item Number	Diameter	Range	Reading	Graduation
700-1033	40 mm	0 - 3 mm	0-100-0	.01 mm
700-1035	60 mm	0 - 10 mm	0-100-0	.01 mm



## PNEUMATIC DIE GRINDERS

- Body Construction: Aluminum
- Collet Size: 1/4"

Item Number	Type	CFM	Air Inlet	Free Speed
700-1750	Standard	4.0	1/4" NPT	25,000 RPM
700-1749	Mini	2.8	1/4" NPT	22,000 RPM





## POLYURETHANE SELF-STORING AIR ASSEMBLIES

- Material: Polyurethane
- Colour: Blue
- Temperature: -40°f to +175°f, -40°c to +79°c
- Fitting 360 brass working male pipe swivels on both ends
- Excellent resistance to water, chemicals, oxidation, hydrolysis and ozone.

Item Number	Hose I.D.	Fitting MPT	Length	PSI
700-1765	1/4"	1/4"	15'	125
700-1766	1/4"	1/4"	25'	125
700-1767	1/4"	1/4"	50'	125
700-1768	3/8"	3/8"	15'	125
700-1769	3/8"	3/8"	25'	125
700-1770	3/8"	3/8"	50'	125



## QUALITY P.V.C. HOSE ASSEMBLIES

- Material: RVH hose
- Colour: Red
- Factory crimped ends with 1/4" brass male pipe ends
- Temperature: -15°f to +150°f, -26°c to +66°c

Item Number	Hose I.D.	Fitting MPT	Length	PSI
700-1761	1/4"	1/4"	25'	300
700-3712	1/4"	1/4"	50'	300
700-1763	3/8"	1/4"	25'	300
700-1764	3/8"	1/4"	50'	300



# HOSE CLAMPS

- Band: 1/2" 301 Stainless Steel
- Screw: 15/16 Slotted, 301 Stainless Steel
- Housing: 301 Stainless Steel
- Constructed of non-corrosive stainless steel for longer life / usage
- Idea for industrial applications



Item Number	Min. Diameter	Max. Diameter
700-2108	3/8"	7/8"
700-2109	7/16"	1"
700-2110	9/16"	1-1/16"
700-2111	9/16"	1-1/4"
700-2112	11/16"	1-1/2"
700-2113	3/4"	1-3/4"
700-2114	1-1/16"	2"
700-2115	1-5/16"	2-1/4"
700-2116	1-9/16"	2-1/2"
700-2117	1-13/16"	2-3/4"
700-2118	2 -1/16"	3"
700-2119	2-5/16"	3-1/4"
700-2120	2-9/16"	3-1/2"
700-2121	2-13/16"	3-3/4"
700-2122	3-1/16"	4"
700-2123	3-5/16"	4-1/4"
700-2124	2-1/2"	4-1/2"
700-2125	3"	5"
700-2126	3-1/2"	5-1/2"
700-2127	3-3/4"	5-3/4"
700-2128	4"	6"
700-2129	2-1/16"	12 -1/4"

- Band: 1/2" 201 Stainless Steel
- Screw: 15/16 Slotted, Carbon Steel
- Housing: 301 Stainless Steel
- Constructed of non-corrosive stainless steel for longer life / usage
- Idea for industrial applications

Item Number	Min. Diameter	Max. Diameter
700-2130	3/8"	7/8"
700-2131	7/16"	1"
700-1815	9/16"	1-1/16"
700-2133	9/16"	1-1/4"
700-1817	11/16"	1-1/2"
700-2135	3/4"	1-3/4"
700-2136	1-1/16"	2"
700-2137	1-5/16"	2-1/4"
700-2138	1-9/16"	2-1/2"
700-2139	1-13/16"	2-3/4"
700-2140	2-1/16"	3"
700-1824	2-5/16"	3-1/4"
700-2142	2-9/16"	3-1/2"
700-2143	2-13/16"	3-3/4"
700-2144	3-1/16"	4"

## BRASS BALL VALVES

- Full Port Threaded
- 600 WOG
- CSA, UL, FM, CGA Certified
- Standard Handle

Item Number	Size (inch)	Handle
700-1247	1/4"	Standard
700-1259	3/8"	Standard
700-1780	1/2"	Standard
700-3714	3/4"	Standard
700-1244	1"	Standard
700-1251	1-1/4"	Standard
700-1249	1-1/2"	Standard
700-1254	2"	Standard
700-1256	3"	Standard
700-1261	4"	Standard



- Lead free valve for drinking water
- Full Port Threaded
- 600 WOG
- CSA, UL, FM Certified
- Standard Handle
- Lead-Free Body

Item Number	Size (inch)	Handle
700-3867	1/4"	Standard
700-3715	3/8"	Standard
700-1780	1/2"	Standard
700-3714	3/4"	Standard
700-1779	1"	Standard
700-1778	1-1/4"	Standard
700-3868	1-1/2"	Standard
700-1782	2"	Standard
700-3713	3"	Standard
700-3716	4"	Standard

- Full Port Threaded
- 600 WOG
- CSA, UL, FM Certified
- Locking Handle

Item Number	Size (inch)	Handle
700-1248	1/4"	Locking
700-1260	3/8"	Locking
700-1246	1/2"	Locking
700-1258	3/4"	Locking
700-1253	1"	Locking
700-1252	1-1/4"	Locking
700-1250	1-1/2"	Locking

# SHOVELS

- All purpose shovel, ideal for most applications
- Durable steel blade engineered to withstand heavy use
- Solid ash handle is stained to help prevent chipping and water damage
- D-Style grip makes using this shovel comfortable and easy
- Blade: stamped steel
- Blade width: 11.25"
- Weight: 5.2 lbs.

Item Number	Length	Blade Width	Handle Type
700-3091	46.5"	11.25"	D

- Square point shovel is ideal for scooping and moving dirt, gravel and other landscaping material
- Solid ash handle is stained to help prevent chipping and water damage
- Durable black tempered steel blade engineered to withstand heavy use
- Forward turned steps on blade for additional leverage
- Blade width: 10.50"
- Weight: 3.8 lbs.

Item Number	Length	Blade Width	Handle Type
700-2201	61.5"	10.50"	Long

- Round point shovel is ideal for digging, planting and moving earth
- Solid ash handle is stained to help prevent chipping and water damage
- Durable black tempered steel blade engineered to withstand heavy use
- Forward turned steps on blade for additional leverage
- Blade Width: 8.50"
- Weight: 4.2 lbs.

Item Number	Length	Blade Width	Handle Type
700-2200	63.5"	8.50"	Long

- Grain Scoop #8
- Ideal of moving grain, seed, feed, fertilizers and other granulated materials
- Handle: hardwood, natural finish
- Handle Length: 48"
- Aluminum blade is lightweight and durable
- Blade width: 13"
- Weight: 3.8 lbs.

Item Number	Length	Blade Width	Handle Type
700-2197	65"	13"	Long



# WINTER SHOVELS

- Poly snow shovel
- Solid ash handle is stained to help prevent chipping and water damage
- D-Style grip makes using this shovel comfortable and easy
- Poly blade offers flexibility in cold temperatures
- Blade Size: 14.5" x 7.5"

Item Number	Length	Blade Width	Handle Type
700-3708	53.5"	14.5" x 7.5"	"D"



- Poly Snow Pusher
- Solid ash handle is stained to help prevent chipping and water damage
- D-Style grip makes using this shovel comfortable and easy
- Poly blade offers flexibility in cold temperatures
- Blade Width: 20.5" x 6"

Item Number	Length	Blade Size	Handle Type
700-3709	56"	20.5" x 6"	"D"



- Poly Snow Pusher
- Solid ash handle is stained to help prevent chipping and water damage
- D-Style grip makes using this shovel comfortable and easy
- Poly blade offers flexibility in cold temperatures
- Blade Size: 25.5" x 5"

Item Number	Length	Blade Size	Handle Type
700-3710	56.5"	25.5" x 5"	"D"



## RAKES

- Bow Rake are ideal of spreading earth, clearing flower beds and loosening soil
- 14 heavy-duty steel tines
- Handle: hardwood
- Handle length: 54"
- Head: baked enamel finish
- Head width: 13.5"
- Weight: 3 lbs.



Item Number	Length	Blade Width	Handle Type
700-2199	59"	13.5"	Long

## MECHANICS VISE

- High quality grey iron casting for increased strength
- Replaceable precision machined hardened steel jaws
- Solid base (Swivel attachment sold separately)

Item Number	Jaw Width	Jaw Opening	Jaw Depth
700-1703	4"	4"	2-3/8"
700-1704	5"	5"	2-7/8"
700-1705	6"	6"	3-1/3"
700-1706	8"	7-7/8"	4"



## MECHANICS VISE: ACCESSORIES & PARTS

Item Number	Description
700-1707	Swivel Base for #3 Vise
700-1708	Swivel Base for #5 Vise
700-1709	Swivel Base for #6 Vise
700-1710	Swivel Base for #8 Vise
700-1711	Replacement Jaw Plates and Screws for #3 Vise
700-1712	Replacement Jaw Plates and Screws for #5 Vise
700-1713	Replacement Jaw Plates and Screws for #6 Vise
700-1714	Replacement Jaw Plates and Screws for #8 Vise



## WORKLIGHT, LED

- Rechargeable battery
- Super bright 1,000 lumens
- 3 Functions: High, Low and Flashing-
- USB Output to charge mobile devices
- IP65 Dust proof and water resistant
- Magnetic handle for easy positioning (10 lbs pull)
- 180 adjustable handle
- Operation time:
  - High setting: 3 hours
  - Low setting: 5 - 6 hours
- Body material: Nylon TPR housing with PC lens
- Operating temperature: -20°c - 60°c



Item Number	Watts	Lumens	IP Rating
700-3869	10 W	1,000	IP65

## FLASHLIGHTS, LED

- 160 Lumens
- 3-Way Function / Switch (low, high, strobe)
- Comes with belt holder & batteries



Item Number	Body	Bulb	Batteries
700-994	Aluminum	Cree	2 - AA

Item Number	Body	Bulb	Batteries*
700-1995	Aluminum	8 LED	3 - AAA
700-1473	Aluminum	12 LED	3 - AAA
700-1472	ABS Plastic	1 NICHIA LED	2 - AA
700-1471	Aluminum	3W LED	2 - AA

\* Batteries not included



## SILICONE

- General Purpose 100% Silicone
- Interior / Exterior
- Forms a durable weatherproof, watertight seal
- Permanently flexible
- Excellent adhesion

Item Number	Cartridge Size	Colour	High Temperature
700-2346	300 ml	Aluminium	No
700-2347	300 ml	Black	No
700-2348	300 ml	Clear	No
700-2349	300 ml	White	No
700-2350	300 ml	Black	Yes
700-2351	300 ml	Red	Yes



## GARBAGE BAGS

- Made from 100% recycled resin
- Easy "Grab and Go" dispenser box
- UL Certified

Item Number	Size	Colour	Strength	Case Quantity
700-1996	22" x 24"	Black	Regular	500
700-4002	22" x 24"	White	Regular	500
700-1998	26" x 36"	Black	Strong	200
700-4004	35" x 50"	Black	Strong	150
700-1999	26" x 36"	Black	Extra Strong	125
700-2001	35" x 50"	Black	Extra Strong	125
700-2002	42" x 48"	Black	Extra Strong	125
700-4008	50" x 50"	Black	Extra Strong	125



## PTFE TAPE

- PTFE Tape
- Thickness: 0.075mm
- 0.35 grams/cubic centimeter
- Colour: White

Item Number	Width	Length	Thickness
700-2214	1/2"	520'	0.075mm





## PAINT BRUSHES

- Handle: Plain wood beaver tail
- Bristles: poly / nylon
- For all paints, stains & varnishes
- Flat sash

Item Number	Width	Thickness	Length
700-3870	1 po (25 mm)	7/16 po (11 mm)	2-1/4 po (57 mm)
700-1219	1-1/2 po (38 mm)	1/2 po (13 mm)	2-1/4 po (57 mm)
700-1220	2 po (50 mm)	1/2 po (13 mm)	2-1/2 po (64 mm)
700-1221	3 po (75 mm)	3/4 po (19 mm)	2-3/4 po (70 mm)
700-1222	4 po (100 mm)	3/4 po (19 mm)	3 po (75 mm)

- Handle: Plain wood
- Bristles: poly / nylon
- For all paints, stains & varnishes
- Angular sash

Item Number	Width	Thickness	Length
700-3871	1-1/2" (38 mm)	1/2" (13 mm)	2-1/4" (57 mm)
700-1223	2" (50 mm)	1/2" (13 mm)	2-1/2" (64 mm)
700-3872	2-1/2" (63 mm)	5/8" (16 mm)	2-3/4" (70 mm)
700-1224	3" (75 mm)	5/8" (16 mm)	2-3/4" (70 mm)



## ECONO PAINT BRUSHES

- General purpose applicator brushes
- Grey bristles for use with oil-based paints, stains and varnishes
- Black plastic handle

Item Number	Width	Thickness	Length
700-1225	1" (25 mm)	3/8" (10 mm)	1-3/4" (44 mm)
700-1226	1-1/2" (38 mm)	5/16" (8 mm)	1-3/4" (44 mm)
700-1229	2" (50 mm)	3/8" (10 mm)	1-3/4" (44 mm)
700-3874	2-1/2" (63 mm)	1/2" (13 mm)	1-3/4" (44 mm)
700-1231	3" (75 mm)	1/2" (13 mm)	1-3/4" (44 mm)
700-1237	4" (100 mm)	11/16" (18 mm)	1-3/4" (44 mm)



## CHIP BRUSHES

- Chip & Oil brushes
- Made with white bristles for use with epoxy, glue, resin, stain, paint remover, cleaners, oils and more.
- Plain wood handle

Item Number	Width	Thickness	Length
700-1228	1" (25 mm)	5/16" (8 mm)	1-1/2" (38 mm)
700-1227	1-1/2" (38 mm)	5/16" (8 mm)	1-1/2" (38 mm)
700-1230	2" (50 mm)	5/16" (8 mm)	1-1/2" (38 mm)
700-1236	3" (75 mm)	3/8" (10 mm)	1-1/2" (38 mm)
700-1238	4" (100 mm)	3/8" (10 mm)	1-3/4" (44 mm)



## HIGH DENSITY FOAM BRUSHES

- Plain wood handle
- High density foam will not leave brush marks or loose bristles

Item Number	Width	Thickness	Length
700-1217	1" (25 mm)	1/2" (13 mm)	2-5/8" (66 mm)
700-1218	2" (50 mm)	1/2" (13 mm)	2-5/8" (66 mm)
700-3875	3" (75 mm)	1/2" (13 mm)	2-5/8" (66 mm)
700-3876	4" (100 mm)	1/2" (13 mm)	2-3/4" (70 mm)



## PAINT ROLLER FRAME

- 4-Wire cage
- Threaded handle end for use with extension pole

Item Number	Handle	Frame	Paint Roller / Refill Size
700-1240	Plastic	Metal	9-1/2" (240 mm)



## PAINT ROLLER SLEEVES

Item Number	Width	Pile	Pile (mm)	Colour
700-1232	9-1/2" (240mm)	3/8" (10 mm)	10	White



## CABLE TIES

- Low insertion and pull through force for easier use
- Higher tensile strength achieved from one piece design
- CSA Approved
- UV Black made of weather-resistant nylon good for indoor or outdoor use
- Natural White made of natural nylon for indoor use only



Item Number (100 Package)	Item Number (1,000 Package)	Colour	Tensile Strength	Length	Width	Thickness
700-1789	700-1790	Natural White	18 lb.	4.10	.095	.042
700-3717	700-3718	UV Black	18 lb.	4.10	.095	.042
700-1797	700-1798	Natural White	18 lb.	6.18	.095	.042
700-1795	700-1796	UV Black	18 lb.	6.18	.095	.042
700-1805	700-1806	Natural White	18 lb.	8.10	.095	.042
700-1803	700-1804	UV Black	18 lb.	8.10	.095	.042

Item Number (100 Package)	Item Number (1,000 Package)	Colour	Tensile Strength	Length	Width	Thickness
700-1793	700-1794	Natural White	40 lb.	5.80	.140	.049
700-1791	700-1792	UV Black	40 lb.	5.80	.140	.049
700-1809	700-1810	Natural White	40 lb.	8.80	.140	.049
700-1807	700-1808	UV Black	40 lb.	8.80	.140	.049
700-1812	-	Natural White	40 lb.	10.96	.140	.049
700-1811	-	UV Black	40 lb.	10.96	.140	.049
700-1818	-	Natural White	40 lb.	14.25	.140	.049
700-3719	-	UV Black	40 lb.	14.25	.140	.049

Item Number (100 Package)	Item Number (1,000 Package)	Colour	Tensile Strength	Length	Width	Thickness
700-1800	700-3877	Natural White	50 lb.	7.50	.180	.052
700-1799	700-3878	UV Black	50 lb.	7.50	.180	.052
700-1814	-	Natural White	50 lb.	11.20	.180	.052
700-1813	-	UV Black	50 lb.	11.20	.180	.052
700-1820	-	Natural White	50 lb.	14.25	.180	.052
700-1819	-	UV Black	50 lb.	14.25	.180	.052
700-1822	-	Natural White	50 lb.	17.00	.180	.052
700-1821	-	UV Black	50 lb.	17.00	.180	.052

## CABLE TIES

- Low insertion and pull through force for easier use
- Higher tensile strength achieved from one piece design
- CSA Approved
- UV Black made of weather-resistant nylon good for indoor or outdoor use
- Natural White made of natural nylon for indoor use only



Item Number (50 Package)	Item Number (100 Package)	Colour	Tensile Strength	Length	Width	Thickness
-	700-1802	Natural White	120 lb.	8.70	.300	.076
-	700-1834	UV Black	120 lb.	8.70	.300	.076
-	700-1816	Natural White	120 lb.	15.00	.300	.076
-	700-1838	UV Black	120 lb.	15.00	.300	.076
700-3720	-	Natural White	120 lb.	18.40	.300	.076
700-1823	-	UV Black	120 lb.	18.40	.300	.076

Item Number (50 Package)	Item Number (100 Package)	Colour	Tensile Strength	Length	Width	Thickness
700-1826	-	Natural White	175 lb.	25.20	.340	.090
700-1825	-	UV Black	175 lb.	25.20	.340	.090
700-1828	-	Natural White	175 lb.	37.20	.340	.090
700-1841	-	UV Black	175 lb.	37.20	.340	.090

## HAND CLEANER

- CFIA Approved

Item Number	Handle	Size
TGHC-003	Pink Lotion Soap	4L
6022	pump	-



## TARPS, LIGHT DUTY

- Water proof and resistance to chemicals, tearing and mildew
- Weave: 8 x 8
- GSM: 85

Item Number	Dimensions	Colour
700-1186	6' X 8'	White
700-1188	8' X 10'	White
700-1190	10' X 12'	White
700-1192	10' X 15'	White
700-1194	15' X 20'	White
700-1196	18' X 24'	White
700-1198	20' X 30'	White
700-1200	30' x 40'	White
700-1202	30' X 50'	White
700-1204	40' X 50'	White
700-1206	40' X 60'	White



Item Number	Dimensions	Colour
700-1185	6' X 8'	Blue
700-1187	8' X 10'	Blue
700-1189	10' X 12'	Blue
700-1191	10' X 15'	Blue
700-1193	15' X 20'	Blue
700-1195	18' X 24'	Blue
700-1197	20' X 30'	Blue
700-1199	30' X 40'	Blue
700-1201	30' X 50'	Blue
700-1203	40' X 50'	Blue
700-1205	40' X 60'	Blue



## TARPS, MEDIUM DUTY

- Water proof and resistance to chemicals, tearing and mildew
- Weave: 10 x 10
- GSM: 110
- Material: H.D.P.E. (High Density Polyethylene)
- Aluminum Grommets Every 3'
- Polyethylene Rope Reinforced Hems

Item Number	Dimensions	Colour
700-2215	6' X 8'	Blue
700-2217	8' X 10'	Blue
700-2219	10' X 12'	Blue
700-2221	10' X 15'	Blue
700-2223	15' X 20'	Blue
700-2225	18' X 24'	Blue
700-2226	20' X 30'	Blue
700-2228	30' X 40'	Blue
700-2229	30' X 50'	Blue
700-2230	40' X 50'	Blue
700-2231	40' X 60'	Blue



Item Number	Dimensions	Colour
700-2216	6' X 8'	Camouflage
700-2218	8' X 10'	Camouflage
700-2220	10' X 12'	Camouflage
700-2222	12' X 14'	Camouflage
700-2224	15' X 20'	Camouflage
700-2227	20' X 30'	Camouflage



## TARPS, HEAVY DUTY

- Water proof and resistance to chemicals, tearing and mildew
- Weave: 12 x 12
- GSM: 110
- Material: H.D.P.E. (High Density Polyethylene)
- Aluminum Grommets Every 3'
- Polyethylene Rope Reinforced Hems

Item Number	Dimensions	Colour
700-3879	6' X 8'	Black
700-3880	10' X 12'	Black
700-3881	10' X 12'	Black
700-3882	15' X 20'	Black
700-3883	20' X 30'	Black
700-3884	30' X 40'	Black
700-3885	30' X 50'	Black

Item Number	Dimensions	Colour
700-3886	6' X 8'	Green
700-3887	10' X 12'	Green
700-3888	10' X 12'	Green
700-3889	15' X 20'	Green
700-3890	20' X 30'	Green
700-3891	30' X 40'	Green
700-3892	30' X 50'	Green



## TARPS, LENO

- Waterproof polyethylene with built-in UV sun protection
- Weave: 3 x 3
- Thickness: 8 mil
- Rust-resistant aluminum grommets Every 3'
- Polyethylene rope reinforced hems
- Ideal for recreational applications, storage, transportation, yard work and general purpose outdoor activity

Item Number	Dimensions	Colour
700-3893	15' X 20'	White
700-3894	20' X 30'	White



## ROPE, BULK REELS

- 3-Strand Polypropylene Twisted
- Polypropylene rope is ideal for general use
- Does not absorb water which allows the rope to float
- ABS riveted reels
- Colour: yellow

Item Number	Diameter	Length	Break Strength
700-3192	3/16"	2125'	520 lbs
700-1647	1/4"	1300'	900 lbs
700-1649	5/16"	975'	1,368 lbs
700-1648	3/8"	630'	1,944 lbs
700-1646	1/2"	335'	3,024 lbs
700-1650	5/8"	200'	4,464 lbs
700-2188	3/4"	125"	6,120 lbs



## RATCHET STRAPS

- Heavy-Duty ratchet tie-down
- Nylon woven straps
- Handle stamped with WLL
- Strap marked with WLL & BS

Item Number	Size	Breaking Strength	Working Load Limit	Colour
<b>Double-J Hook</b>				
700-1084	16' x 1"	3,000 lbs.	1,500 lbs	Yellow
700-1085	27' x 2"	11,000 lbs.	5,000 lbs	Yellow

Item Number	Size	Breaking Strength	Working Load Limit	Colour
<b>Flat Hook</b>				
700-2183	27' x 2"	11,000 lbs.	5,000 lbs	Yellow

Item Number	Size	Breaking Strength	Working Load Limit	Colour
<b>Coated "S" Hook</b>				
700-2180	16' x 1"	3,000 lbs.	1,000 lbs	Red
700-2181	16' x 1"	3,000 lbs.	1,000 lbs	Black
700-2182	20' x 1"	3,000 lbs.	1,000 lbs	Yellow



700-1084

700-1085



700-2183



700-2180



700-2181



## WEB SLINGS, TYPE 3

- Polyester slings are resistant to most chemicals. Not resistant to acids, aldehydes, ethers and strong alkalins
- Type 3, 2 Ply, double eye

Item Number	Width	Length	Vertical WLL (lbs)	Choker WLL (lbs)	Basket WLL (lbs)
700-3009	1"	4'	3,100	2,480	6,200
700-3012	1"	6'	3,100	2,480	6,200
700-3013	1"	8'	3,100	2,480	6,200
700-3014	1"	10'	3,100	2,480	6,200
700-2278	1"	12'	3,100	2,480	6,200
700-1783	2"	2'	6,200	4,960	12,400
700-1784	2"	4'	6,200	4,960	12,400
700-1785	2"	6'	6,200	4,960	12,400
700-1786	2"	8'	6,200	4,960	12,400
700-1787	2"	10'	6,200	4,960	12,400
700-1788	2"	12'	6,200	4,960	12,400
700-2285	2"	16'	6,200	4,960	12,400
700-2286	2"	18'	6,200	4,960	12,400
700-2287	2"	20'	6,200	4,960	12,400
700-3030	3"	6'	8,800	7,040	17,600
700-3031	3"	8'	8,800	7,040	17,600
700-2290	3"	10'	8,800	7,040	17,600
700-2291	3"	12'	8,800	7,040	17,600
700-2293	3"	16'	8,800	7,040	17,600
700-2294	3"	18'	8,800	7,040	17,600
700-2295	3"	20'	8,800	7,040	17,600
700-2296	4"	6'	11,000	8,800	22,000
700-2297	4"	8'	11,000	8,800	22,000
700-2298	4"	10'	11,000	8,800	22,000
700-2299	4"	12'	11,000	8,800	22,000
700-2301	4"	16'	11,000	8,800	22,000
700-2302	4"	18'	11,000	8,800	22,000
700-2303	4"	20'	11,000	8,800	22,000



## WEB SLINGS, TYPE 4

- Polyester slings are resistant to most chemicals. Not resistant to acids, aldehydes, ethers and strong alkalins
- Type 4, 2 Ply, double eye

Item Number	Width	Length	Vertical WLL (lbs)	Choker WLL (lbs)	Basket WLL (lbs)
700-2304	2"	4'	6,200	4,960	12,400
700-2305	2"	6'	6,200	4,960	12,400
700-2306	2"	8'	6,200	4,960	12,400
700-2307	2"	10'	6,200	4,960	12,400
700-2308	2"	12'	6,200	4,960	12,400



## ROUND SLINGS

- Core: Polyester
- Cover: Polyester

Item Number	Colour	Length	Vertical WLL (lbs)	Choker WLL (lbs)	90 Basket WLL (lbs)
700-2239	Purple	3'	3,000	2,400	6,000
700-2240	Purple	4'	3,000	2,400	6,000
700-2241	Purple	6'	3,000	2,400	6,000
700-2242	Purple	8'	3,000	2,400	6,000
700-2243	Purple	10'	3,000	2,400	6,000
700-2244	Purple	12'	3,000	2,400	6,000
700-2245	Green	3'	6,000	4,800	12,000
700-2246	Green	4'	6,000	4,800	12,000
700-2247	Green	5'	6,000	4,800	12,000
700-2248	Green	6'	6,000	4,800	12,000
700-2249	Green	8'	6,000	4,800	12,000
700-2250	Green	12'	6,000	4,800	12,000
700-2251	Green	15'	6,000	4,800	12,000
700-2252	Green	20'	6,000	4,800	12,000



## ROUND SLINGS

- Core: Polyester
- Cover: Polyester

Item Number	Colour	Length	Vertical WLL (lbs)	Choker WLL (lbs)	90 Basket WLL (lbs)
700-2253	Yellow	3'	9,000	7,200	18,000
700-2254	Yellow	4'	9,000	7,200	18,000
700-2255	Yellow	6'	9,000	7,200	18,000
700-2256	Yellow	8'	9,000	7,200	18,000
700-2257	Yellow	10'	9,000	7,200	18,000
700-2258	Yellow	12'	9,000	7,200	18,000
700-2259	Yellow	15'	9,000	7,200	18,000
700-2260	Yellow	20'	9,000	7,200	18,000
700-2261	Red	4'	14,000	11,200	28,000
700-2262	Red	6'	14,000	11,200	28,000
700-2263	Red	8'	14,000	11,200	28,000
700-2264	Red	10'	14,000	11,200	28,000
700-2265	Red	12'	14,000	11,200	28,000
700-2266	Red	15'	14,000	11,200	28,000
700-2267	Red	20'	14,000	11,200	28,000
700-2268	Blue	4'	23,000	18,400	46,000
700-2269	Blue	6'	23,000	18,400	46,000
700-2270	Blue	8'	23,000	18,400	46,000
700-2271	Blue	10'	23,000	18,400	46,000
700-2272	Blue	12'	23,000	18,400	46,000
700-2273	Blue	20'	23,000	18,400	46,000



## WINCH STRAPS

- Polyester webbing
- Colour: Yellow
- B.S.: 16,000 lbs.
- W.L.L.: 5,300 lbs.

Item Number	Size	Breaking Strength	Working Load Limit	Hook
700-3895	4" x 30'	16,000 lbs	5,300 lbs	Flat
700-3896	4" x 40'	16,000 lbs'	5,300 lbs	Flat
700-3897	4" x 30'	16,000 lbs'	5,300 lbs	Delta



## CASTERS, RUBBER

- Blue elastic rubber wheels perform well on all types of surfaces
- Temperature range: -20°C to +70°C
- Non-marking wheels

(RIGID)



(SWIVEL)



(SWIVEL w BRAKE)



Item Number (RIGID)	Item Number (SWIVEL)	Item Number (SWIVEL w BRAKE)	Diameter	Width	Load Rating	Plate Size
700-1271	700-1272	700-1273	3"	1-1/2"	220 lbs.	3-1/16 x 2-3/8
700-1274	700-1275	700-1276	4"	1-1/2"	330 lbs.	3-1/16 x 2-3/8
700-1277	700-1278	700-1279	5"	1-3/4"	440 lbs.	3-1/16 x 2-3/8
700-1280	700-1281	700-1282	6"	2-3/8"	770 lbs.	4-1/8 x 3-1/16

## CASTERS, POLYURETHANE

- Orange polyurethane wheels are suitable for heavier applications
- Temperature range: -20°C to +80°C
- Resistant to most cleaners and moisture
- Precision ball bearings

(RIGID)



(SWIVEL)



(SWIVEL w BRAKE)



Item Number (RIGID)	Item Number (SWIVEL)	Item Number (SWIVEL w BRAKE)	Diameter	Width	Load Rating	Plate Size
700-1285	700-1286	700-1287	4"	2"	600 lbs	3-3/8 x 2-13/16
700-1288	700-1289	700-1290	5"	2"	750 lbs	3-3/8 x 2-13/16
700-1291	700-1292	700-1293	6"	2"	900 lbs	3-3/8 x 2-13/16
700-1294	700-1295	700-1296	8"	2"	900 lbs	3-3/8 x 2-13/16

## CASTERS, POLYURETHANE

- Medium Duty Applications
- Non-marking, cut & tear resistant
- Chemical resistant
- Smooth, low noise operation

(RIGID)



(SWIVEL)



(SWIVEL w BRAKE)



Item Number (RIGID)	Item Number (SWIVEL)	Item Number (SWIVEL w BRAKE)	Diameter	Width	Load Rating	Plate Size
700-3898	700-4010	700-4013	3"	1.25"	220 lbs	3-11/16 x 2-7/16
700-3899	700-4011	700-4014	4"	1.25"	264 lbs	3-11/16 x 2-7/16
700-4009	700-4012	700-4015	5"	1.25"	286 lbs	3-11/16 x 2-7/16

## CASTERS, PHENOLIC

- Phenolic wheels are suitable for smooth concrete and can be used for storage (standing) loads without permanent set
- Highly resistant to oil, grease, gasoline and mild acids
- Not recommended for wet applications
- Temperature range: -40°C to +120°C

(RIGID)



(SWIVEL)



(SWIVEL w BRAKE)



Item Number (RIGID)	Item Number (SWIVEL)	Item Number (SWIVEL w BRAKE)	Diameter	Width	Load Rating	Plate Size
700-3225	700-1844	700-1845	4"	2"	550 lbs	3-3/8 x 2-13/16
700-1846	700-3230	700-1848	5"	2"	700 lbs	3-3/8 x 2-13/16
700-1849	700-1850	700-3235	6"	2"	800 lbs	3-3/8 x 2-13/16
700-1852	700-3232	700-1854	8"	2"	900 lbs	3-3/8 x 2-13/16

## CASTERS, POLYOLEFIN

- Medium Duty Applications
- Non-Marking
- Oil and chemical resistant
- Temperature: -43°C to 82°C

(RIGID)



(SWIVEL)



(SWIVEL w BRAKE)



Item Number (RIGID)	Item Number (SWIVEL)	Item Number (SWIVEL w BRAKE)	Diameter	Width	Load Rating	Plate Size
700-3751	700-3752	700-3753	2.5"	1.25"	176 lbs	3-11/16 x 2-7/16
700-3754	700-3755	700-3756	3"	1.25"	220 lbs	3-11/16 x 2-7/16
700-2352	700-2353	700-2354	4"	1.25"	264 lbs	3-11/16 x 2-7/16
700-2355	700-2356	700-2357	5"	1.25"	286 lbs	3-11/16 x 2-7/16

## HAND TRUCKS

- Pneumatic Wheels
- 600 lbs. Capacity
- Tubular Steel Frame
- Powder Coat Finish
- Steel Hubs
- Steel Ball Bearings

Item Number	Handle	Height	Weight
700-1586	Dual	46"	20 lbs.
700-1588	Loop "P"	52"	23 lbs.
700-1590	10" Pneumatic Wheel (Replacement)		



## CONVERTIBLE HAND TRUCK

- 600 lbs. Capacity
- Converts From 2-Wheel Hand Truck to 4-Wheel Flat Bed Trolley
- Steel Frame
- Solid Rubber Wheels

Item Number	Capacity	Height	Weight
700-2102	600 lbs.	51"	33 lbs.
700-1591	10" Hard Rubber Wheel (Replacement)		



## PALLET TRUCK

- 5,500 lbs. Capacity
- Hand Lever for Selecting "Raise", "Neutral" and "Lower"
- Steel Hub Polyurethane Coated Wheels

Item Number	Capacity	Frame Width	Frame Length
700-1629	5,500 lbs.	27"	48"
Replacement Parts Available, Contact Distributor for Details.			



## LINK CHAIN

• NACM 1990



Item Number	Type	Diameter	Finish	Length	Working Load Limit (lbs)	Proof Test (lbs)	Breaking Force Min
700-4016	Grade 70	1/4"	Yellow	400'	3,150	6,100	12,100
700-4017	Grade 70	1/4"	Yellow	800'	3,150	6,100	12,100
700-4018	Grade 70	5/16"	Yellow	250'	4,700	9,400	18,800
700-4019	Grade 70	5/16"	Yellow	500'	4,700	9,400	18,800
700-4020	Grade 70	3/8"	Yellow	200'	6,600	12,400	24,700
700-4021	Grade 70	3/8"	Yellow	400'	6,600	12,400	24,700
700-4022	Grade 70	1/2"	Yellow	100'	11,300	20,900	41,800
700-4023	Grade 70	1/2"	Yellow	200'	11,300	20,900	41,800
700-4024	Grade 30	3/16"	Galvanized	1,000'	800	1,600	3,200
700-4025	Grade 30	1/4"	Galvanized	525'	1,300	2,600	5,200
700-4026	Grade 30	5/16"	Galvanized	300'	1,900	3,400	6,800
700-4027	Grade 30	3/8"	Galvanized	200'	2,650	5,300	10,600
700-4028	Grade 30	3/16"	Self Colour	1,000'	800	1,600	3,200
700-4029	Grade 30	1/4"	Self Colour	525'	1,300	2,600	5,200
700-4030	Grade 30	3/8"	Self Colour	200'	2,650	5,300	10,600
700-4031	Grade 30	1/8"	Zinc Coated	1300'	375	800	1,600
700-4032	Grade 30	3/16"	Zinc Coated	800'	800	1,600	3,200
700-4033	Grade 30	1/4"	Zinc Coated	450'	1,300	2,600	5,200
700-4034	Grade 30	5/16"	Zinc Coated	275'	1,900	3,400	6,800
700-4035	Grade 30	3/8"	Zinc Coated	200'	2,650	5,300	10,600

## GRAB HOOK



Item Number	Size	Material	WLL (lbs)
700-1003	1/4"	Grade 70	3,150
700-1005	5/16"	Grade 70	4,700
700-1004	3/8"	Grade 70	6,660
700-1002	1/2"	Grade 70	11,300

## CLEVIS SLIP HOOK



Item Number	Size	Material	WLL (lbs)
700-1007	1/4"	Grade 70	2,750
700-1010	5/16"	Grade 70	4,300
700-1008	3/8"	Grade 70	5,250
700-1006	1/2"	Grade 70	9,000

# CARBIDE BURRS

- Double Cut
- 1/4" Shank Diameter



Item Number	Shape	Head Diameter	Flute Length
700-1087	<b>SA</b> Cylindrical	1/4"	5/8"
700-1089	<b>SA</b> Cylindrical	5/16"	3/4"
700-1090	<b>SA</b> Cylindrical	3/8"	3/4"
700-1096	<b>SA</b> Cylindrical	7/16"	1"
700-1098	<b>SA</b> Cylindrical	1/2"	1"
700-1101	<b>SA</b> Cylindrical	5/8"	1"
700-1102	<b>SA</b> Cylindrical	3/4"	1"
700-1103	<b>SA</b> Cylindrical	1"	1"
700-1086	<b>SA</b> Cylindrical	3/16"	5/8"
700-1105	<b>SB</b> Cylindrical - End Cut	1/4"	5/8"
700-1106	<b>SB</b> Cylindrical - End Cut	3/8"	3/4"
700-1108	<b>SB</b> Cylindrical - End Cut	1/2"	1"
700-1109	<b>SC</b> Cylindrical - Radius Cut	1/4"	5/8"
700-1111	<b>SC</b> Cylindrical - Radius Cut	5/16"	3/4"
700-1113	<b>SC</b> Cylindrical - Radius Cut	3/8"	3/4"
700-1118	<b>SC</b> Cylindrical - Radius Cut	7/16"	1"
700-1120	<b>SC</b> Cylindrical - Radius Cut	1/2"	1"
700-1123	<b>SC</b> Cylindrical - Radius Cut	5/8"	1"
700-1125	<b>SD</b> Ball	1/4"	3/16"
700-1127	<b>SD</b> Ball	5/16"	1/4"
700-1128	<b>SD</b> Ball	3/8"	5/16"
700-1134	<b>SD</b> Ball	1/2"	7/16"
700-1136	<b>SD</b> Ball	5/8"	9/16"
700-1137	<b>SD</b> Ball	3/4"	11/16"
700-1124	<b>SD</b> Ball	3/16"	1/8"
700-1138	<b>SE</b> Oval	1/4"	3/8"
700-1138	<b>SE</b> Oval	3/8"	5/8"
700-1142	<b>SE</b> Oval	1/2"	7/8"
700-1143	<b>SE</b> Oval	5/8"	1"

Item Number	Shape	Head Diameter	Flute Length
700-1831	<b>SE</b> Oval	3/4"	1"
700-1145	<b>SF</b> Tree - Radius End	1/4"	5/8"
700-1146	<b>SF</b> Tree - Radius End	3/8"	3/4"
700-1150	<b>SF</b> Tree - Radius End	1/2"	1"
700-1153	<b>SF</b> Tree - Radius End	5/8"	1"
700-1155	<b>SF</b> Tree - Radius End	3/4"	1"
700-1144	<b>SF</b> Tree - Radius End	1/2"	3/4"
700-1832	<b>SF</b> Tree - Radius End	3/4"	1-1/4"
700-1156	<b>SG</b> Tree - Pointed End	1/4"	5/8"
700-1157	<b>SG</b> Tree - Pointed End	5/16"	3/4"
700-1158	<b>SG</b> Tree - Pointed End	3/8"	3/4"
700-1160	<b>SG</b> Tree - Pointed End	1/2"	1"
700-1162	<b>SG</b> Tree - Pointed End	5/8"	1"
700-3721	<b>SG</b> Tree - Pointed End	1/2"	3/4"
700-1163	<b>SH</b> Flame	1/4"	5/8"
700-1835	<b>SH</b> Flame	5/16"	3/4"
700-1166	<b>SH</b> Flame	1/2"	1-1/4"
700-1836	<b>SH</b> Flame	5/8"	1-7/16"
700-1168	<b>SL</b> Taper - Radius Cut	1/4"	5/8"
700-1170	<b>SL</b> Taper - Radius Cut	5/16"	7/8"
700-1171	<b>SL</b> Taper - Radius Cut	3/8"	1-1/16"
700-1174	<b>SL</b> Taper - Radius Cut	1/2"	1-1/8"
700-1839	<b>SL</b> Taper - Radius Cut	5/8"	1-3/16"
700-1177	<b>SM</b> Cone - Pointed End	1/4"	1/2"
700-3252	<b>SM</b> Cone - Pointed End	1/4"	3/4"
700-1178	<b>SM</b> Cone - Pointed End	1/4"	1"
700-1180	<b>SM</b> Cone - Pointed End	3/8"	5/8"
700-1182	<b>SM</b> Cone - Pointed End	1/2"	7/8"
700-1183	<b>SM</b> Cone - Pointed End	5/8"	1"



## MINIATURE CARBIDE BURRS

- 1/8" Shank Diameter
- 1-1/2" Overall Length

Item Number	Shape	Cut Diameter	Flute Length
700-1094 <b>SA</b>	Cylindrical	1/16"	1/4"
700-4036 <b>SA</b>	Cylindrical	3/32"	7/16"
700-1829 <b>SA</b>	Cylindrical	1/8"	9/16"
700-1107 <b>SB</b>	Cylindrical - End Cut	1/8"	9/16"
700-1116 <b>SC</b>	Cylindrical - Radius Cut	3/32"	7/16"
700-1830 <b>SC</b>	Cylindrical - Radius Cut	1/8"	9/16"
700-4037 <b>SD</b>	Ball	3/32"	3/32"
700-1132 <b>SD</b>	Ball	1/8"	1/8"
700-4038 <b>SE</b>	Oval	1/8"	7/32"
700-1833 <b>SF</b>	Tree - Radius End	1/8"	1/4"
700-1149 <b>SF</b>	Tree - Radius End	1/8"	1/2"
700-1165 <b>SH</b>	Flame	1/8"	1/4"
700-1837 <b>SL</b>	Taper - Radius Cut	1/8"	3/8"
700-3722 <b>SL</b>	Taper - Radius Cut	1/8"	1/2"
700-1179 <b>SM</b>	Cone - Pointed End	1/8"	11/32"
700-3723 <b>SM</b>	Cone - Pointed End	1/8"	7/16"

- 1/8" Shank Diameter
- 1/4" Cutting Diameter

Item Number	Shape	Cut Diameter	Flute Length
700-1119 <b>SC</b>	Cylindrical - Radius Cut	1/4"	1/2"
700-1133 <b>SD</b>	Ball	1/4"	1/4"
700-1141 <b>SE</b>	Oval	1/4"	3/8"
700-1159 <b>SM</b>	Tree - Pointed End	1/4"	1/2"

- 1/8" Shank Diameter
- 3/16" Cutting Diameter

Item Number	Shape	Cut Diameter	Flute Length
700-1097 <b>SA</b>	Cylindrical	3/16"	1/2"
700-1176 <b>SC</b>	Taper - Radius Cut	3/16"	1/2"

## CARBIDE BURRS, SPECIALTY

- 6" Long Shank
- Double Cut, 1/4" Shank Diameter

Item Number	Shape	Head Diameter	Flute Length
700-1088 <b>SA</b>	Cylindrical	1/4"	1/2"
700-1092 <b>SA</b>	Cylindrical	3/8"	3/4"
700-1110 <b>SC</b>	Cylindrical - Radius Cut	1/4"	1/2"
700-1112 <b>SC</b>	Cylindrical - Radius Cut	5/16"	3/4"
700-1114 <b>SC</b>	Cylindrical - Radius Cut	3/8"	3/4"
700-1121 <b>SC</b>	Cylindrical - Radius Cut	1/2"	1"
700-4039 <b>SD</b>	Ball	1/4"	3/16"
700-1129 <b>SD</b>	Ball	3/8"	5/16"
700-1140 <b>SE</b>	Oval	3/8"	3/4"
700-1147 <b>SF</b>	Tree - Radius End	3/8"	3/4"
700-1151 <b>SF</b>	Tree - Radius End	1/2"	1"
700-4040 <b>SM</b>	Tree - Pointed End	3/8"	3/4"
700-1161 <b>SM</b>	Tree - Pointed End	1/2"	1"
700-1164 <b>SH</b>	Flame	5/16"	3/4"
700-1169 <b>SL</b>	Taper - Radius Cut	1/4"	5/8"
700-1172 <b>SL</b>	Taper - Radius Cut	3/8"	1-1/16"

- Non Ferrous
- Double Cut, 1/4" Shank Diameter

Item Number	Shape	Head Diameter	Flute Length
700-1093 <b>SA</b>	Cylindrical	3/8"	3/4"
700-1100 <b>SA</b>	Cylindrical	1/2"	1"
700-1115 <b>SC</b>	Cylindrical - Radius Cut	3/8"	3/4"
700-1122 <b>SC</b>	Cylindrical - Radius Cut	1/2"	1"
700-1130 <b>SD</b>	Ball	3/8"	-
700-1135 <b>SD</b>	Ball	1/2"	-
700-1148 <b>SF</b>	Tree - Radius End	3/8"	3/4"
700-1152 <b>SF</b>	Tree - Radius End	1/2"	1"
700-1154 <b>SF</b>	Tree - Radius End	5/8"	1"
700-1173 <b>SL</b>	Taper - Radius Cut	3/8"	1-1/16"

# CARBIDE BURR SETS

- Double Cut

Item Number	# of Pieces	Burrs in Set
700-3265	8	SA5, SC3, SC5, SD5, SF3, SF5, SG3, SL4
700-4041	8	SA-3, SB-3, SC-3, SE-3, SF-3, SG-1, SL-3, SM-2



# STEP DRILLS

- Material: M2
- TIN Coated
- Triple Flat Shank

Item Number	Size	Range	Steps	Increments	Shank
700-1465	#1	1/8" - 1/2"	13	1/32"	1/4"
700-1466	#2	3/16" - 1/2"	6	1/16"	1/4"
700-1467	#3	1/4" - 3/4"	9	1/16"	3/8"
700-1468	#4	3/16" - 7/8"	12	1/16"	3/8"
700-1469	#5	1/4" - 1-3/8"	10	1/8"	1/2"



# DRILL BIT SETS

- Jobber Drills
- Metal Case
- 135° Split Point
- M2 High Speed Steel DIN338
- Size Range: 1/16" to 1/2"

Item Number	Description
700-1455	29 Piece Jobber Drill Bit Set <b>Two Tone (Black/Gold) Finish</b> Size Range: 1/16" to 1/2" (by 1/16" sizes)
700-1422	29 Piece Jobber Drill Bit Set <b>Black Oxide Finish</b> Size Range: 1/16" to 1/2" (by 1/16" sizes)
700-4042	60 Piece Jobber Drill Bit Set <b>Two Tone (Black/Gold) Finish</b> Numbers Size Range: 1 to 60



## PRENTICE DRILL BITS

- 8 Piece Set, Prentice Drills
- Black Oxide Finish
- Metal Case
- 135° Split Point
- M2 High Speed Steel DIN338
- 1/2" Shank
- Triple Flat Shank

Item Number	Description
700-1462	8 Piece Prentice Drill Bit Set Includes: Sizes Included: 9/16", 5/8", 11/16", 3/4", 13/16", 7/8", 15/16", 1"

- Black Oxide Finish
- Prentice Drills
- 135° Split Point
- M2 High Speed Steel DIN338
- 1/2" Shank
- Triple Flat Shank

Item Number	Diameter	Flute Length	Overall Length
700-1456	9/16"	3-1/8"	5-7/8"
700-1457	5/8"	3-1/8"	5-7/8"
700-1458	11/16"	3-1/8"	5-7/8"
700-1459	3/4"	3-1/8"	5-7/8"
700-1460	13/16"	3-1/8"	5-7/8"
700-1461	7/8"	3-1/8"	5-7/8"
700-1463	15/16"	3-1/8"	5-7/8"
700-1464	1"	3-1/8"	5-7/8"



## DRILL BIT CABINET

- 29 Cabinets
- Labelled with Fractional Sizes
- Plexiglass Doors (front & rear)
- Lockable

Item Number	Description
700-1470	Drill Bit Cabinet for 29 Fractional Sizes



# DRILL BITS

- Jobber Drills, Fractional Sizes
- 135° Split Point
- M2 High Speed Steel DIN338



## Two Tone Finish, Triple Flat Shank

Item Number	Size	Flute Length	Overall Length
700-1423	1/64"	3/16"	13/16"
700-1424	1/32"	3/8"	1-3/16"
700-1425	3/64"	5/8"	1-1/2"
700-1426	1/16"	13/16"	1-11/16"
700-1427	5/64"	15/16"	1-15/16"
700-1428	3/32"	1-3/16"	2-1/4"
700-1429	7/64"	1-5/16"	2-3/8"
700-1430	1/8"	1-7/16"	2-9/16"
700-1431	9/64"	1-9/16"	2-3/4"
700-1432	5/32"	1-11/16"	2-15/16"
700-1433	11/64"	1-7/8"	3-1/8"
700-1434	3/16"	2-1/16"	3-3/8"
700-1435	13/64"	2-1/16"	3-3/8"
700-1436	7/32"	2-1/4"	3-11/16"
700-1437	15/64"	2-1/4"	3-11/16"
700-1438	1/4"	2-1/2"	4"
700-1439	17/64"	2-11/16"	4-5/16"
700-1440	9/32"	2-11/16"	4-5/16"
700-1441	19/64"	2-15/16"	4-5/8"
700-1442	5/16"	2-15/16"	4-5/8"
700-1443	21/64"	2-15/16"	4-5/8"
700-1444	11/32"	3-3/16"	4-15/16"
700-1445	23/64"	3-3/16"	4-15/16"
700-1446	3/8"	3-7/16"	5-1/4"
700-1447	25/64"	3-7/16"	5-1/4"
700-1448	13/32"	3-7/16"	5-1/4"
700-1449	27/64"	3-11/16"	5-9/16"
700-1450	7/16"	3-11/16"	5-9/16"
700-1451	29/64"	3-11/16"	5-9/16"
700-1452	15/32"	4"	5-15/16"
700-1453	31/64"	4"	5-15/16"
700-1454	1/2"	4"	5-15/16"



## Black Oxide Finish, Round Shank

Item Number	Size	Flute Length	Overall Length
700-1390	1/64"	3/16"	13/16"
700-1391	1/32"	3/8"	1-3/16"
700-1392	3/64"	5/8"	1-1/2"
700-1393	1/16"	13/16"	1-11/16"
700-1394	5/64"	15/16"	1-15/16"
700-1395	3/32"	1-3/16"	2-1/4"
700-1396	7/64"	1-5/16"	2-3/8"
700-1397	1/8"	1-7/16"	2-9/16"
700-1398	9/64"	1-9/16"	2-3/4"
700-1399	5/32"	1-11/16"	2-15/16"
700-1400	11/64"	1-7/8"	3-1/8"
700-1401	3/16"	2-1/16"	3-3/8"
700-1402	13/64"	2-1/16"	3-3/8"
700-1403	7/32"	2-1/4"	3-11/16"
700-1404	15/64"	2-1/4"	3-11/16"
700-1405	1/4"	2-1/2"	4"
700-1406	17/64"	2-11/16"	4-5/16"
700-1407	9/32"	2-11/16"	4-5/16"
700-1408	19/64"	2-15/16"	4-5/8"
700-1409	5/16"	2-15/16"	4-5/8"
700-1410	21/64"	2-15/16"	4-5/8"
700-1411	11/32"	3-3/16"	4-15/16"
700-1412	23/64"	3-3/16"	4-15/16"
700-1413	3/8"	3-7/16"	5-1/4"
700-1414	25/64"	3-7/16"	5-1/4"
700-1415	13/32"	3-7/16"	5-1/4"
700-1416	27/64"	3-11/16"	5-9/16"
700-1417	7/16"	3-11/16"	5-9/16"
700-1418	29/64"	3-11/16"	5-9/16"
700-1419	15/32"	4"	5-15/16"
700-1420	31/64"	4"	5-15/16"
700-1421	1/2"	4"	5-15/16"

## DRILL BITS

- Jobber Drills, Number Sizes
- Two Tone Finish (Black/Gold)
- 135° Split Point
- M2 High Speed Steel DIN338
- Triple Flat Shank



Item Number	Size	Flute Length	Overall Length
700-1892	1	2-5/8"	3-7/8"
700-1893	2	2-5/8"	3-7/8"
700-1894	3	2-1/2"	3-3/4"
700-1895	4	2-1/2"	3-3/4"
700-1896	5	2-1/2"	3-3/4"
700-1897	6	2-1/2"	3-3/4"
700-1898	7	2-7/16"	3-5/8"
700-1899	8	2-7/16"	3-5/8"
700-1900	9	2-7/16"	3-5/8"
700-1901	10	2-7/16"	3-5/8"
700-1902	11	2-5/16"	3-1/2"
700-1903	12	2-5/16"	3-1/2"
700-1904	13	2-5/16"	3-1/2"
700-1905	14	2-3/16"	3-3/8"
700-3728	15	2-3/16"	3-3/8"
700-1907	16	2-3/16"	3-3/8"
700-1908	17	2-3/16"	3-3/8"
700-1909	18	2-1/8"	3-1/4"
700-1910	19	2-1/8"	3-1/4"
700-1911	20	2-1/8"	3-1/4"
700-1912	21	2-1/8"	3-1/4"
700-3571	22	2"	3-1/8"
700-1914	23	2"	3-1/8"
700-1915	24	2"	3-1/8"
700-1916	25	1-7/8"	3"
700-1917	26	1-7/8"	3"
700-1918	27	1-7/8"	3"
700-1919	28	1-3/4"	2-7/8"
700-3578	29	1-3/4"	2-7/8"
700-3579	30	1-5/8"	2-3/4"

Item Number	Size	Flute Length	Overall Length
700-1922	31	1-5/8"	2-3/4"
700-1923	32	1-5/8"	2-3/4"
700-1924	33	1-1/2"	2-5/8"
700-1925	34	1-1/2"	2-5/8"
700-1926	35	1-1/2"	2-5/8"
700-3585	36	1-7/16"	2-1/2"
700-1928	37	1-7/16"	2-1/2"
700-1929	38	1-7/16"	2-1/2"
700-1930	39	1-3/8"	2-3/8"
700-3589	40	1-3/8"	2-3/8"
700-1932	41	1-3/8"	2-3/8"
700-1933	42	1-1/4"	2-1/4"
700-1934	43	1-1/4"	2-1/4"
700-1935	44	1-1/8"	2-1/8"
700-1936	45	1-1/8"	2-1/8"
700-1937	46	1-1/8"	2-1/8"
700-1938	47	1"	2"
700-1939	48	1"	2"
700-1940	49	1"	2"
700-1941	50	1"	2"
700-1942	51	1"	2"
700-1943	52	7/8"	1-7/8"
700-1944	53	7/8"	1-7/8"
700-1945	54	7/8"	1-7/8"
700-1946	55	7/8"	1-7/8"
700-1947	56	3/4"	1-3/4"
700-1948	57	3/4"	1-3/4"
700-1949	58	11/16"	1-5/8"
700-1950	59	11/16"	1-5/8"
700-1951	60	11/16"	1-5/8"

## DRILL BITS

- Jobber Drills, Letter Sizes
- Two Tone Finish (Black/Gold)
- 135° Split Point
- M2 High Speed Steel DIN338
- Triple Flat Shank

Item Number	Size	Flute Length	Overall Length
700-1866	A	2-5/8"	3-7/8"
700-1867	B	2-3/4"	4"
700-1868	C	2-3/4"	4"
700-1869	D	2-3/4"	4"
700-1870	E	2-3/4"	4"
700-1871	F	2-7/8"	4-1/8"
700-1872	G	2-7/8"	4-1/8"
700-1873	H	2-7/8"	4-1/8"
700-1874	I	2-7/8"	4-1/8"
700-1875	J	2-7/8"	4-1/8"
700-1876	K	2-15/16"	4-1/4"
700-1877	L	2-15/16"	4-1/4"
700-1878	M	3-1/16"	4-3/8"
700-1879	N	3-1/16"	4-3/8"
700-1880	O	3-3/16"	4-1/2"
700-1881	P	3-5/16"	4-5/8"
700-1882	Q	3-7/16"	4-3/4"
700-3724	R	3-7/16"	4-3/4"
700-3725	S	3-1/2"	4-7/8"
700-3726	T	3-1/2"	4-7/8"
700-3727	U	3-5/8"	5"
700-1887	V	3-5/8"	5"
700-1888	W	3-3/4"	5-1/8"
700-1889	X	3-3/4"	5-1/8"
700-1890	Y	3-7/8"	5-1/4"
700-1891	Z	3-7/8"	5-1/4"



- Stubb Drill Bits, Fractional Sizes
- Black Oxide Finish
- 135° Split Point
- M2 High Speed Steel DIN338
- Triple Flat Shank

Item Number	Size	Flute Length	Overall Length
700-1358	1/64"	3/16"	5/8"
700-1359	1/32"	1/4"	7/8"
700-1360	3/64"	5/16"	1-3/16"
700-1361	1/16"	3/8"	1-5/16"
700-1362	5/64"	1/2"	1-1/2"
700-1363	3/32"	9/16"	1-11/16"
700-1364	7/64"	5/8"	1-13/16"
700-1365	1/8"	11/16"	1-15/16"
700-1366	9/64"	13/16"	2-1/16"
700-1367	5/32"	7/8"	2-3/16"
700-1368	11/64"	15/16"	2-5/16"
700-1369	3/16"	1"	2-7/16"
700-1370	13/64"	1"	2-7/16"
700-1371	7/32"	1-1/8"	2-5/8"
700-1372	15/64"	1-1/8"	2-5/8"
700-1373	1/4"	1-1/4"	2-3/4"
700-1374	17/64"	1-5/16"	2-15/16"
700-1375	9/32"	1-5/16"	2-15/16"
700-1376	19/64"	1-7/16"	3-1/8"
700-1377	5/16"	1-7/16"	3-1/8"
700-1378	21/64"	1-7/16"	3-1/8"
700-1379	11/32"	1-9/16"	3-5/16"
700-1380	23/64"	1-9/16"	3-5/16"
700-1381	3/8"	1-11/16"	3-1/2"
700-1382	25/64"	1-11/16"	3-1/2"
700-1383	13/32"	1-11/16"	3-1/2"
700-1384	27/64"	1-7/8"	3-3/4"
700-1385	7/16"	1-7/8"	3-3/4"
700-1386	29/64"	1-7/8"	3-3/4"
700-1387	15/32"	2"	4"
700-1388	31/64"	2"	4"
700-1389	1/2"	2"	4"

<b>Air Hose</b>		
	Polyurethane	.36
	PVC Assemblies	.36
	Self-Storing	.36
<b>Aviation Snips</b>		.29
<b>Barricade Tape</b>		
	Boxed	.6
	Bulk	.6
<b>Brass Ball Valves</b>		
	Locking Handle	.38
	Standard	.38
<b>Cable Ties</b>		.46-47
<b>Calipers</b>		
	Digital	
	IP54	.34
	Plastic	.34
	Stainless	.34
<b>Carbide Burrs</b>		
	Double Cut	.59
	Long Shank	.60
	Minatare	.60
	Non-Ferrous	.60
	Sets	.61
<b>Casters</b>		
	Elastic Rubber	.55
	Polyurethane	.55
	Phenolic	.56
	Polyolefin	.56
<b>Coveralls</b>		
	50 GSM	.7
	Fire Spreading Resistant	.7
<b>Delineator Posts</b>		.5
<b>Dial Indicators</b>		.36
<b>Drill Bits</b>		
	Jobber	
	Fractional	.63
	Letter	.65
	Number	.64
	Prentice	.62
<b>Drill Bits</b>		
	Sets	
	Black Oxide	.61
	Number	.61
	Prentice	.62
	Two-Tone	.61
	Stubb	
	Fractional	.65
<b>Flagging Tape</b>		.6
<b>Flashlights</b>		.42
<b>Garbage Bags</b>		.43
<b>Gloves</b>		
	Coated	.9-12
	Cotton	.19-20
	Disposable	.8
	Leather	.14-18
	Mechanics	.13
	PVC	.13
	Welding	.20-22
	Work	.13
<b>Hand Cleaner</b>		
	Orange Pumice	.47
	Pink Lotion	.47
<b>Hand Trucks</b>		.57
<b>Hex Key</b>		
	Standard	.30
<b>Hole Saws</b>		
	Individual	.31
	Kits	.31
<b>Hooks</b>		
	Grab	.58
	Slip	.58
<b>Hose Clamps</b>		.37
<b>Levels</b>		
	I-Beam	.33
	Laser	.33
	Standard	.33
	Torpedo	.33
<b>Link Chain</b>		
	Grade 30	.58
	Grade 70	.58
<b>Mechanics Vise</b>		.41
	Parts	.41
<b>Micrometers</b>		.34
<b>Paint Brushes</b>		
	Angular	.44
	Chip	.45
	Econo	.44
	Flat	.44
	Foam	.45
<b>Pallet Truck</b>		.57
<b>Pliers</b>		
	Bent Nose	.28
	Diagonal Cutters	.28
	Linesman's	.28
	Locking Jaw, Curved	.28
	Long Nose	.28
	Slip Joint	.28
	Tongue & Groove	.28

<b>Pneumatic</b>		
	Die Grinder	
	Mini	.35
	Standard	.35
<b>Pry Bar</b>		.29
<b>Rainwear</b>		
	Fire-Retardent	.7
<b>Rake</b>		.41
<b>Respirator Masks</b>		
	Dust	.1
	N95	.1
<b>Rope, Poly</b>		.51
<b>Safety Glasses</b>		.2-3
<b>Safety Vests</b>		
	Harness	.4
	Vests	.3-4
<b>Screwdrivers</b>		.30
<b>Shovels</b>		
	All-Purpose	.39
	Grain Scoop	.39
	Round Point	.39
	Square Point	.39
<b>Shovels</b>		
	Winter	.40
<b>Silicone</b>		
	General Purpose	.43
	Hi-Temp	.43
<b>Slings</b>		
	Round	.53-54
	Web	.52-53
<b>Sockets</b>		
	Deep Impact	.24
	Standard Sets	.23

<b>Straps</b>		
	Ratchet	.51
	Winch	.54
<b>Tape Measures</b>		.35
<b>Tape, PTFE</b>		.43
<b>Tarps</b>		
	Heavy Duty	.50
	Leno	.50
	Light Duty	.48
	Medium Duty	.49
<b>Tins Snips</b>		.29
<b>Traffic Cones</b>		
	18"	.5
	28"	.5
	Bar	.6
<b>Utility Bar</b>		.29
<b>Utility Knife</b>		
	Blades	.32
	Heavy-Duty	.32
	Standard	.32
<b>Worklight, LED</b>		.42
<b>Wrecking Bar</b>		.29
<b>Wrenches</b>		
	Adjustable	.27
	Combination	
	Metric	.26
	SAE	.25
	Pipe	
	Cast Iron	.27
	Aluminum	.27

WARRANTY - All Tuff Grade branded products are guaranteed against defects in workmanship and materials. All hand tools and air tools have a lifetime replacement warranty on defective products when the tool is used for the purpose for which it was designed. Any Tuff Grade product that fails within the specified warranty period will be repaired or replaced, at the distributors discretion, at no charge to the end-user. All warranties are void if there is evidence of misuse, abuse or alteration of the product in any way. Incidental or consequential damages are excluded from this warranty.

WARRANTY PROCEDURE - Tuff Grade products being submitted for a warranty claim should be returned to place of purchase with proof of purchase and an explanation of the defect.



**WWW.TUFFGRADE.CA**

**For the latest product news and updates  
make sure you visit [www.tuffgrade.ca](http://www.tuffgrade.ca).**



**CATALOG 2020**



**WWW.PRDISTRIBUTION.CA**  
**1 800 463-5259**